

APPENDIX H

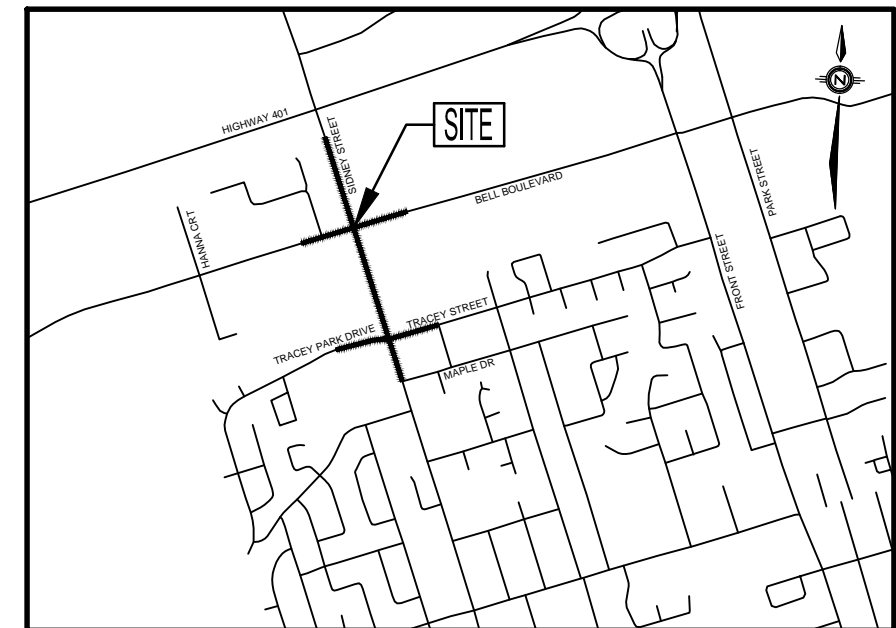
Preliminary Design Drawing



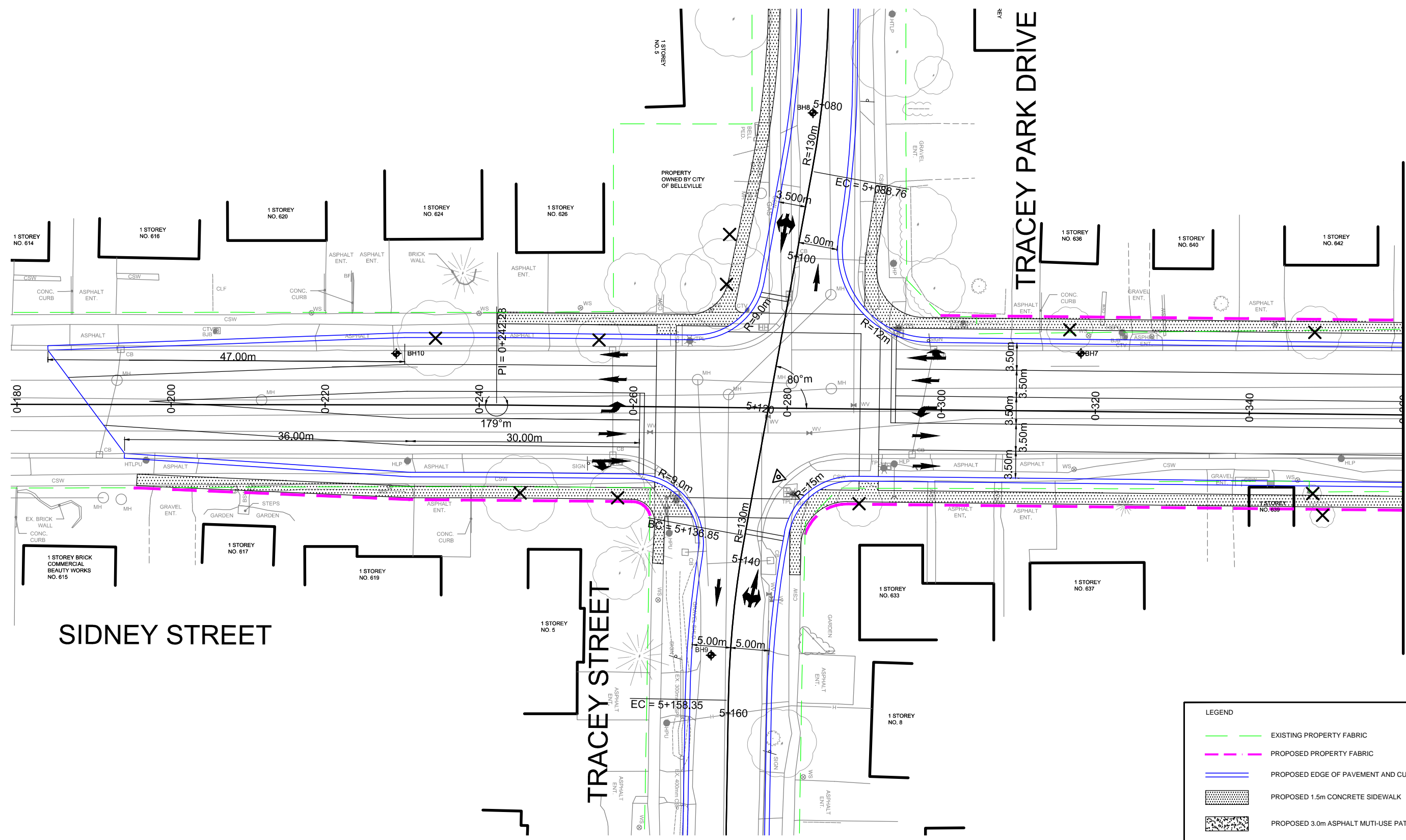
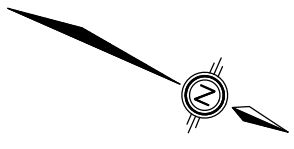
CITY OF BELLEVILLE



SIDNEY STREET ENVIRONMENTAL ASSESSMENT & PRELIMINARY DESIGN TRACEY STREET TO BELL BOULEVARD BELLEVILLE



KEY MAP
N.T.S.



SIDNEY STREET

TRACEY STREET

TRACEY PARK DRIVE

LEGEND		NOTES:
	EXISTING PROPERTY FABRIC	1. THE LOCATION AND DESIGNS OF PROPOSED ENTRANCES ARE CONCEPTUAL ONLY AND WILL BE FURTHER DEFINED AS PART OF THE SITE PLAN PROCESS. ✕ TREE REMOVAL
	PROPOSED PROPERTY FABRIC	
	PROPOSED EDGE OF PAVEMENT AND CURB	
	PROPOSED 1.5m CONCRETE SIDEWALK	
	PROPOSED 3.0m ASPHALT MULTI-USE PATH	

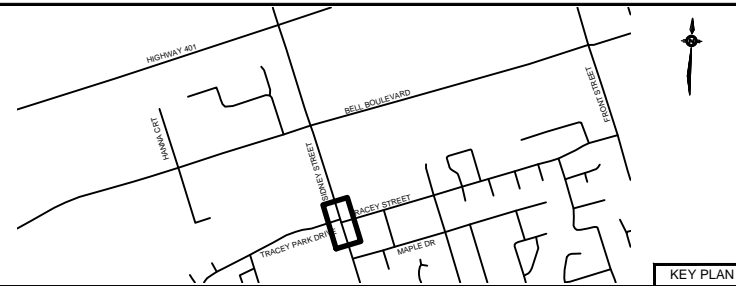
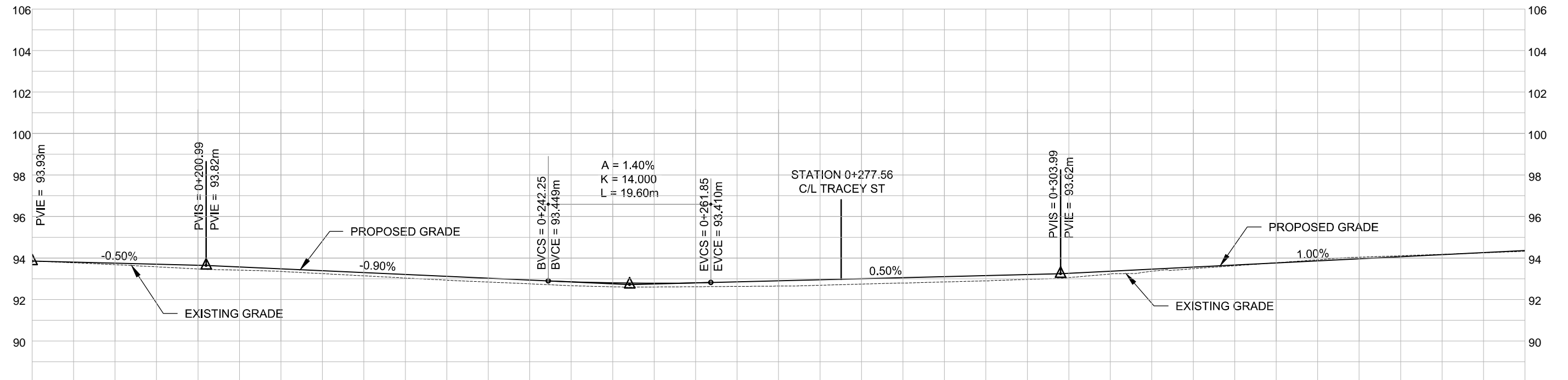


PLATE 1
RECOMMENDED PLAN - STUDY LIMITS STA 0+180 TO 0+360

SIDNEY STREET ENVIRONMENTAL ASSESSMENT STUDY &
PRELIMINARY DESIGN FROM TRACEY STREET TO BELL
BOULEVARD

SCALE
1:500



PROPOSED ROAD GRADE	93.93	93.83	93.65	93.47	93.40	93.50	93.60	93.78	93.98	93.98	PROPOSED ROAD GRADE
CHAINAGE	0+180	0+200	0+220	0+240	0+260	0+280	0+300	0+320	0+340	0+360	CHAINAGE

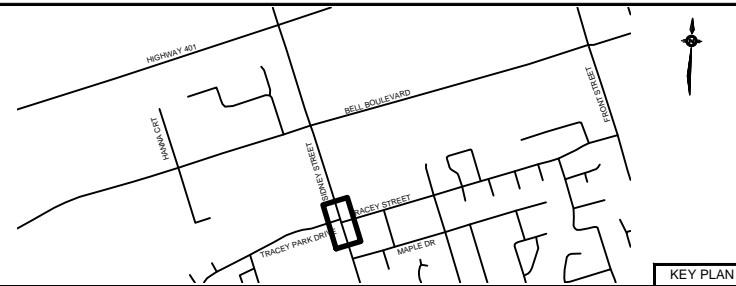


PLATE 2
RECOMMENDED PROFILE - STUDY LIMITS STA 0+180 TO 0+360

SIDNEY STREET ENVIRONMENTAL ASSESSMENT STUDY &
 PRELIMINARY DESIGN FROM TRACEY STREET TO BELL
 BOULEVARD






SCALE
1:500



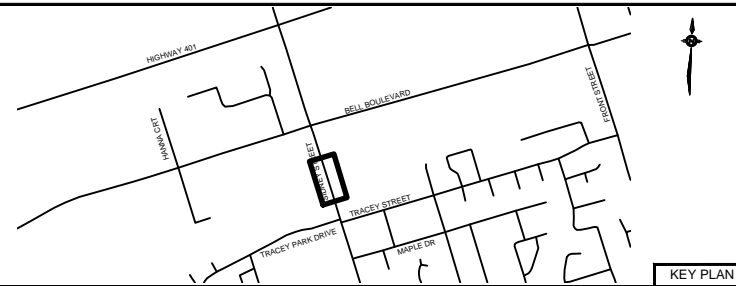
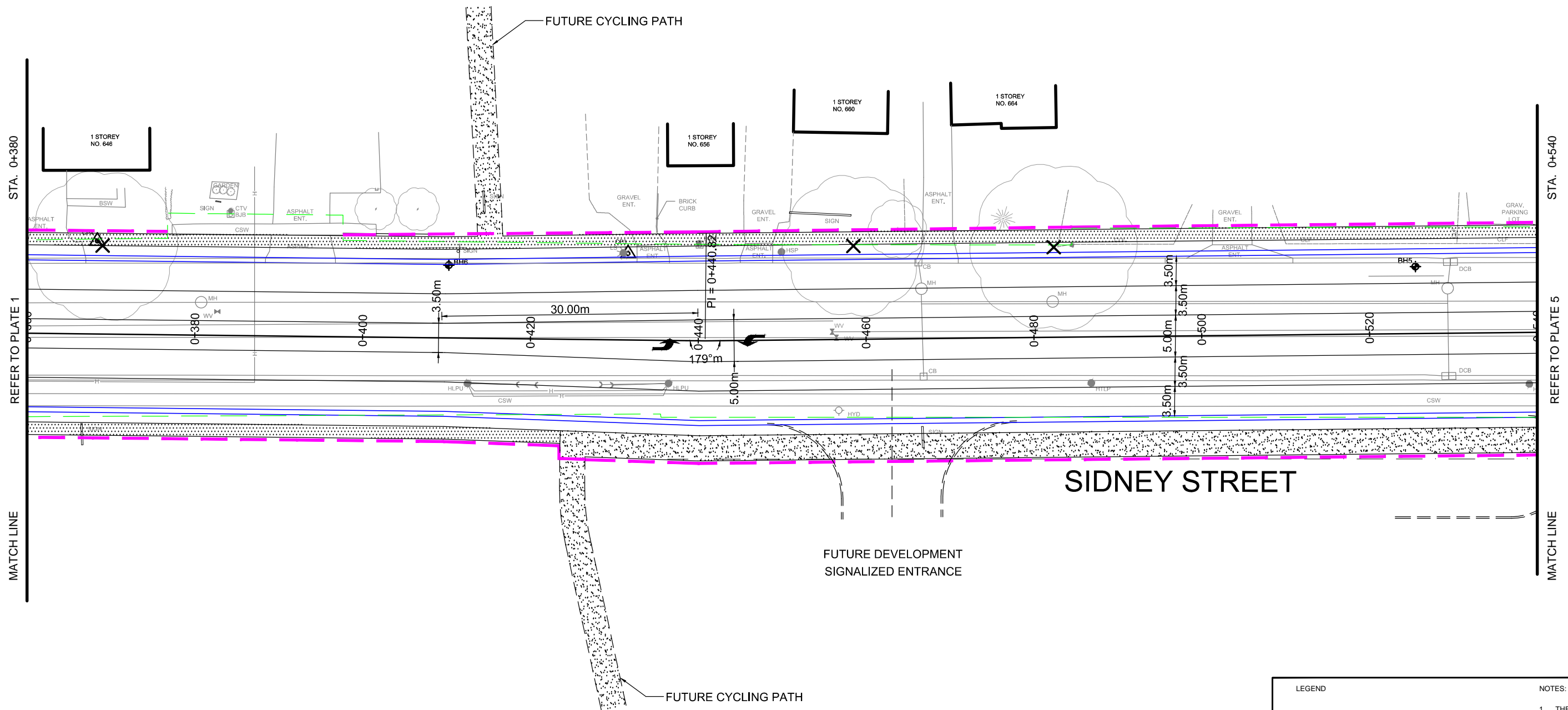
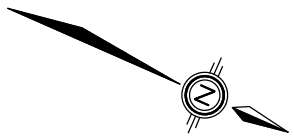
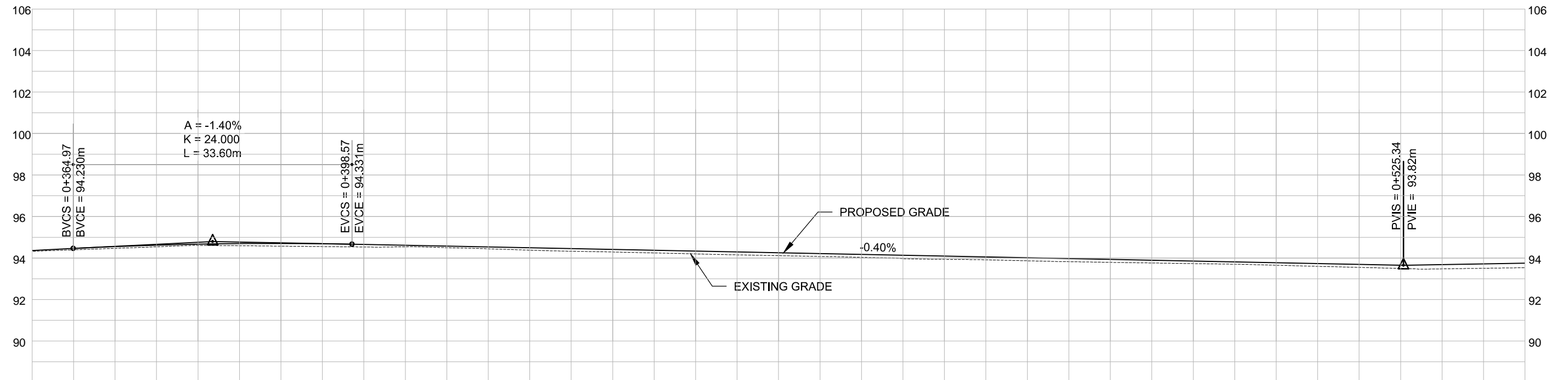


PLATE 3

RECOMMENDED PLAN - STUDY LIMITS STA 0+360 TO 0+540

SIDNEY STREET ENVIRONMENTAL ASSESSMENT STUDY &
PRELIMINARY DESIGN FROM TRACEY STREET TO BELL
BOULEVARD

SCALE
1:500



PROPOSED ROAD GRADE	94.18	94.33	94.33	94.25	94.17	94.09	94.01	93.93	93.85	93.88	PROPOSED ROAD GRADE
CHAINAGE	0+360	0+380	0+400	0+420	0+440	0+460	0+480	0+500	0+520	0+540	CHAINAGE

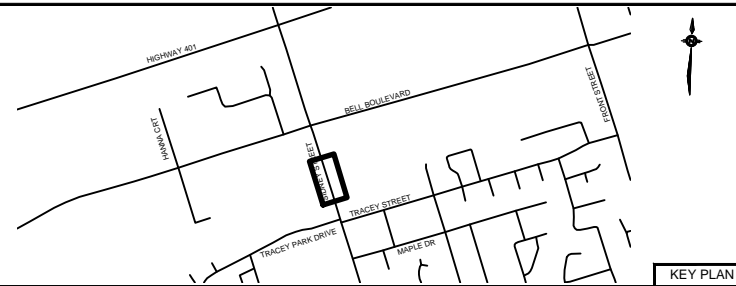


PLATE 4
RECOMMENDED PROFILE- STUDY LIMITS STA 0+360 TO 0+540

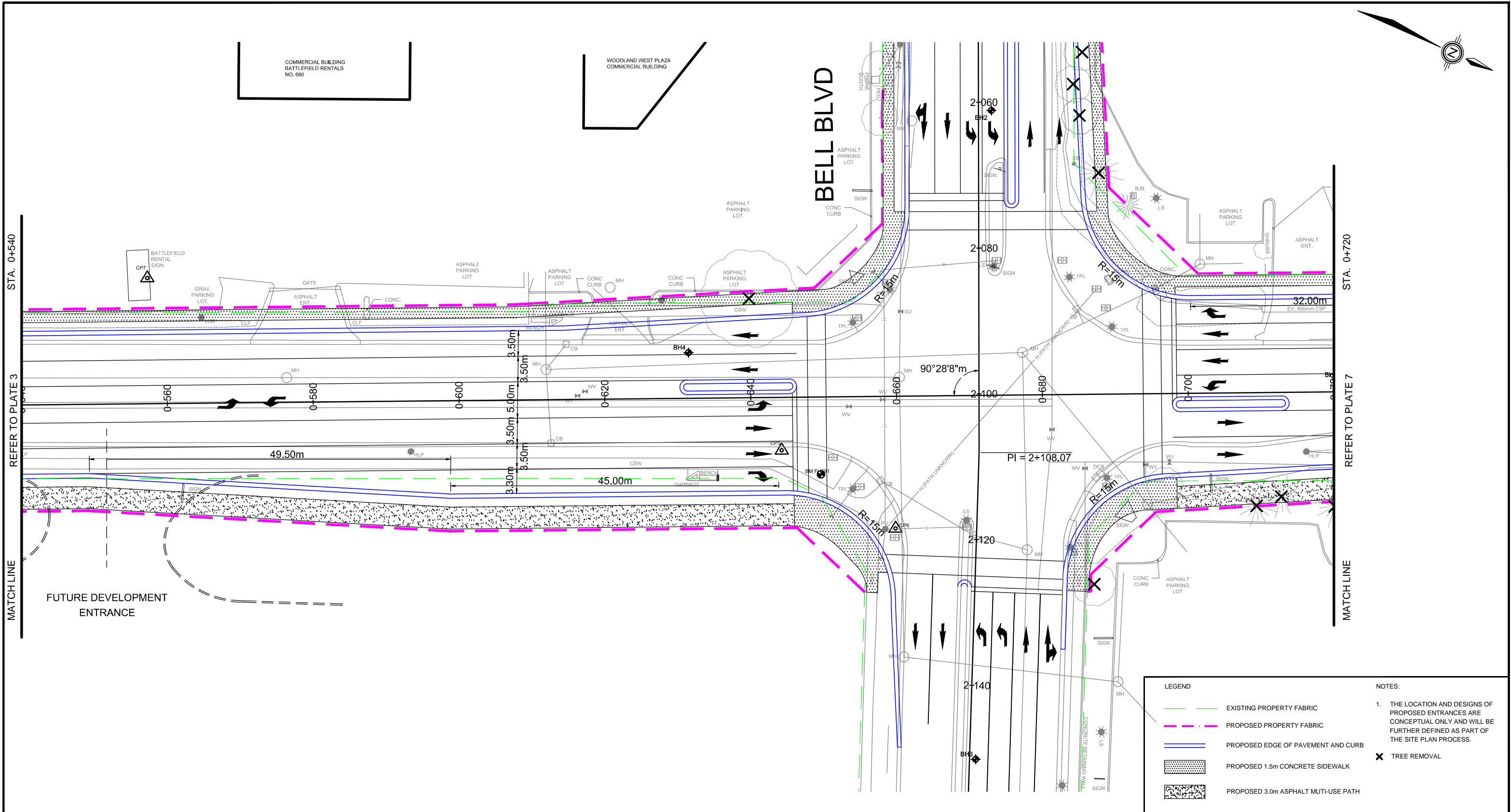
SIDNEY STREET ENVIRONMENTAL ASSESSMENT STUDY &
 PRELIMINARY DESIGN FROM TRACEY STREET TO BELL
 BOULEVARD






SCALE
1:500





STA. 0+540
REFER TO PLATE 3
MATCH LINE

STA. 0+720
REFER TO PLATE 7
MATCH LINE

LEGEND		NOTES:
	EXISTING PROPERTY FABRIC	1. THE LOCATION AND DESIGNS OF PROPOSED ENTRANCES ARE CONCEPTUAL ONLY AND WILL BE FURTHER DEFINED AS PART OF THE SITE PLAN PROCESS. X TREE REMOVAL
	PROPOSED PROPERTY FABRIC	
	PROPOSED EDGE OF PAVEMENT AND CURB	
	PROPOSED 1.5m CONCRETE SIDEWALK	
	PROPOSED 3.0m ASPHALT MULTI-USE PATH	

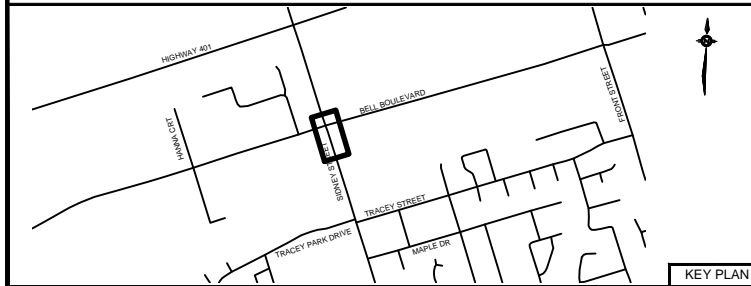
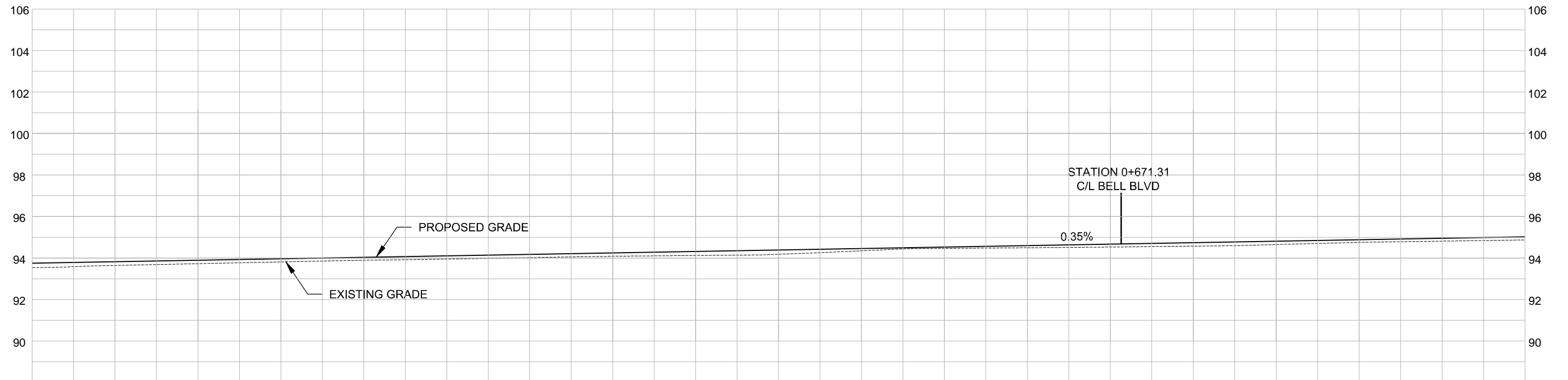


PLATE 5
RECOMMENDED PLAN - STUDY LIMITS STA 0+540 TO 0+720

SIDNEY STREET ENVIRONMENTAL ASSESSMENT STUDY &
 PRELIMINARY DESIGN FROM TRACEY STREET TO BELL
 BOULEVARD

SCALE
1:500



PROPOSED ROAD GRADE	93.88	93.95	94.02	94.09	94.16	94.23	94.30	94.37	94.44	94.51	EXISTING ROAD GRADE
CHAINAGE	0+540	0+560	0+580	0+600	0+620	0+640	0+660	0+680	0+700	0+720	CHAINAGE

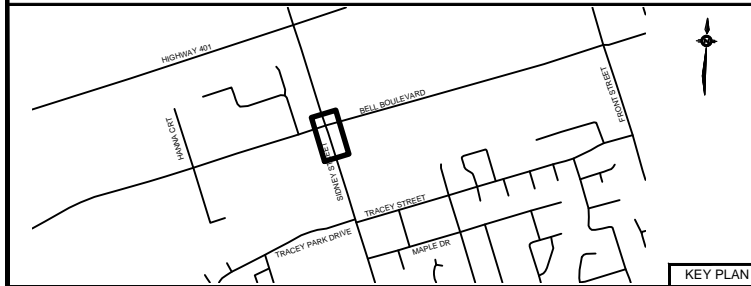


PLATE 6
RECOMMENDED PROFILE - STUDY LIMITS STA 0+540 TO 0+720

SIDNEY STREET ENVIRONMENTAL ASSESSMENT STUDY &
 PRELIMINARY DESIGN FROM TRACEY STREET TO BELL
 BOULEVARD



BELLEVILLE
on the Bay of Quinte



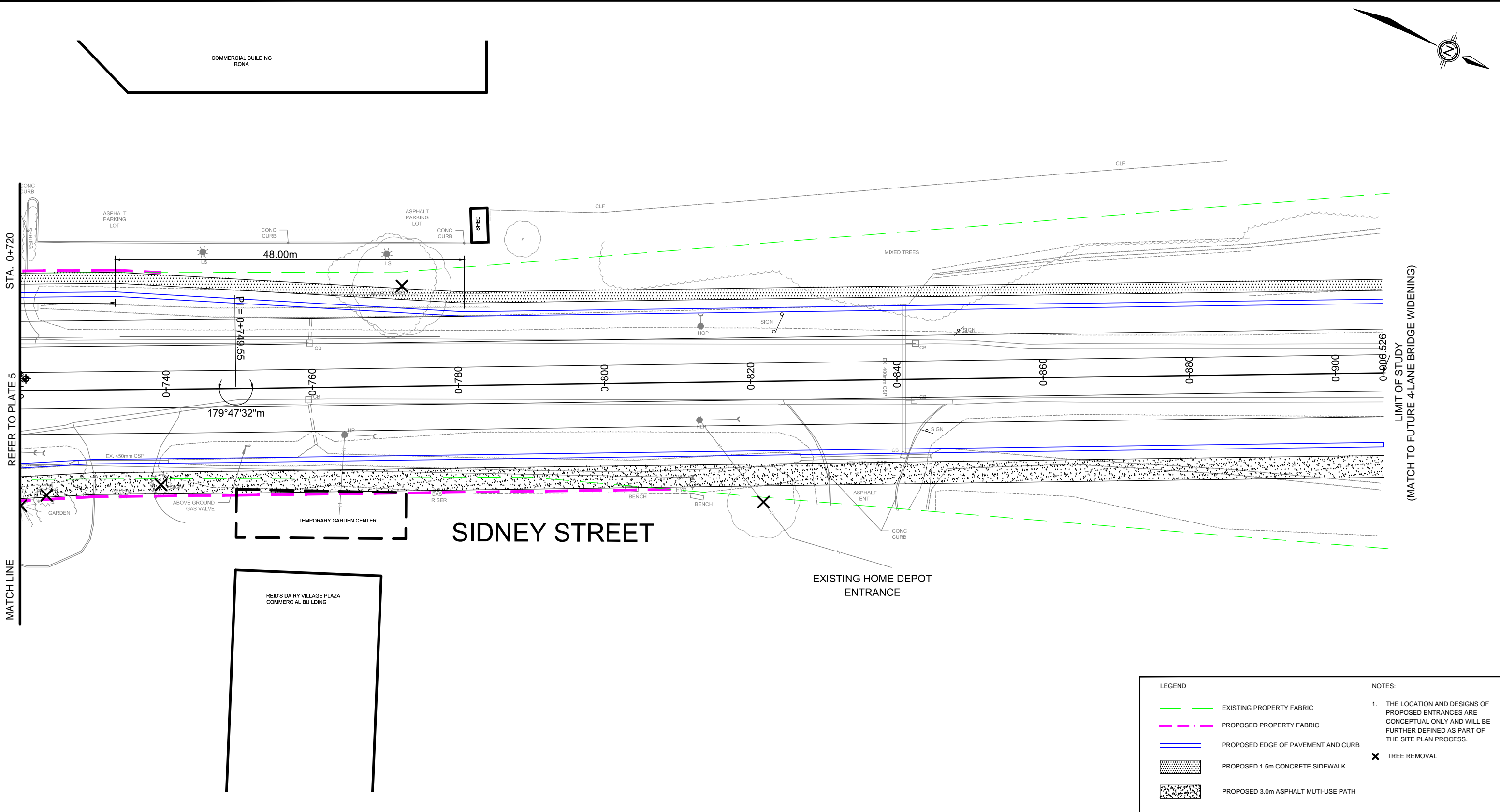
CIMA
Partners in excellence



Golder Associates

SCALE
1:500



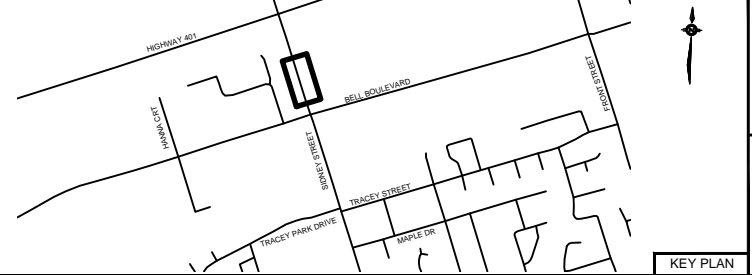


STA. 0+720
REFER TO PLATE 5
MATCHLINE

LIMIT OF STUDY
(MATCH TO FUTURE 4-LANE BRIDGE WIDENING)

SIDNEY STREET

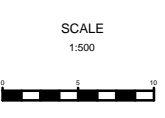
LEGEND		NOTES:
	EXISTING PROPERTY FABRIC	1. THE LOCATION AND DESIGNS OF PROPOSED ENTRANCES ARE CONCEPTUAL ONLY AND WILL BE FURTHER DEFINED AS PART OF THE SITE PLAN PROCESS. ✕ TREE REMOVAL
	PROPOSED PROPERTY FABRIC	
	PROPOSED EDGE OF PAVEMENT AND CURB	
	PROPOSED 1.5m CONCRETE SIDEWALK	
	PROPOSED 3.0m ASPHALT MULTI-USE PATH	

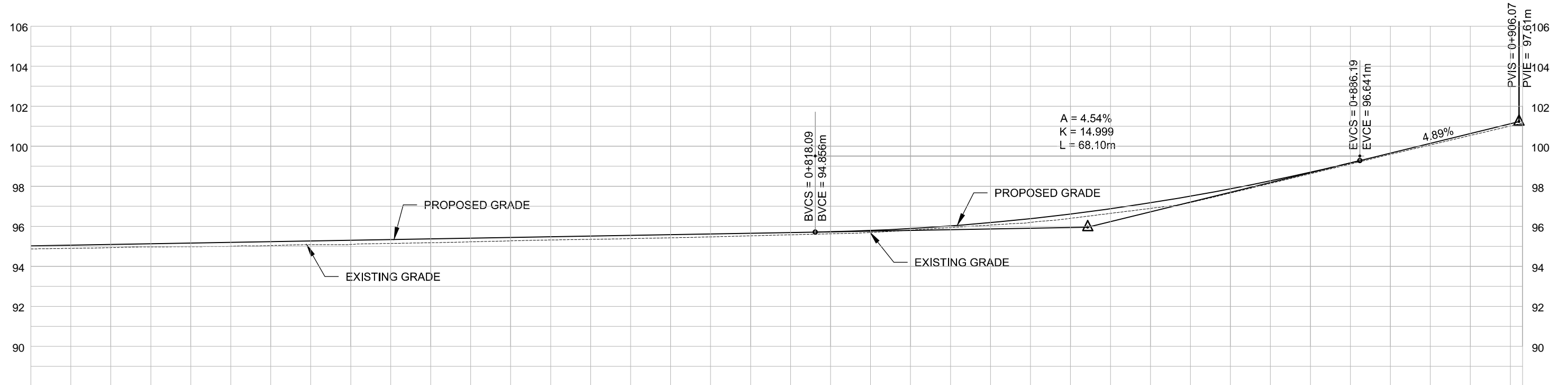


KEY PLAN

PLATE 7 RECOMMENDED PLAN - STUDY LIMITS STA 0+720 TO 0+907

SIDNEY STREET ENVIRONMENTAL ASSESSMENT STUDY & PRELIMINARY DESIGN FROM TRACEY STREET TO BELL BOULEVARD





PROPOSED ROAD GRADE	94.51	94.58	94.65	94.72	94.79	94.86	95.09	95.59	96.35	97.32	97.61	PROPOSED ROAD GRADE
CHAINAGE	0+720	0+740	0+760	0+780	0+800	0+820	0+840	0+860	0+880	0+900	0+907	CHAINAGE

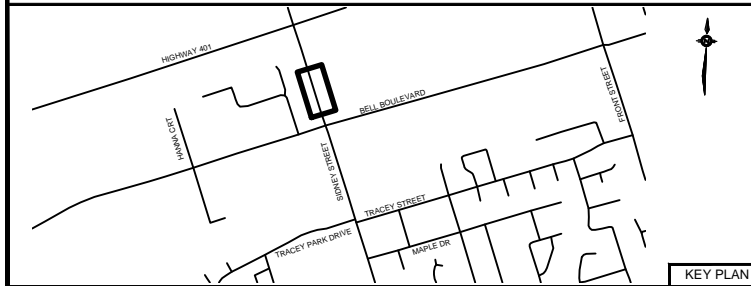


PLATE 8
RECOMMENDED PLAN - STUDY LIMITS STA 0+720 TO 0+907

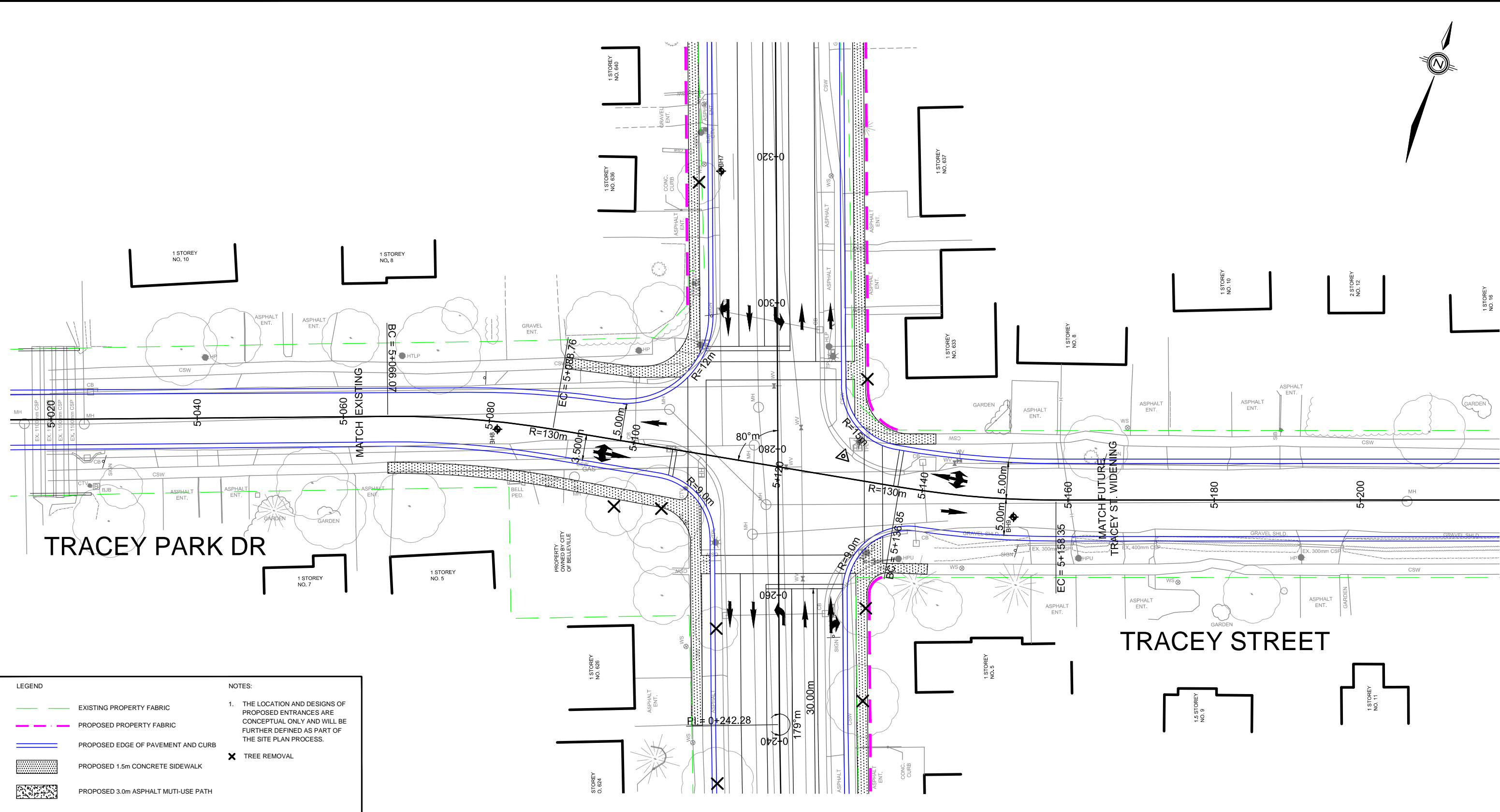
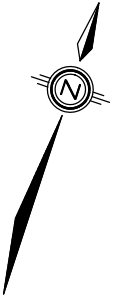
SIDNEY STREET ENVIRONMENTAL ASSESSMENT STUDY &
 PRELIMINARY DESIGN FROM TRACEY STREET TO BELL
 BOULEVARD






SCALE
1:500





TRACEY STREET

LEGEND	NOTES:
	EXISTING PROPERTY FABRIC
	PROPOSED PROPERTY FABRIC
	PROPOSED EDGE OF PAVEMENT AND CURB
	PROPOSED 1.5m CONCRETE SIDEWALK
	PROPOSED 3.0m ASPHALT MULTI-USE PATH
	TREE REMOVAL
	1. THE LOCATION AND DESIGNS OF PROPOSED ENTRANCES ARE CONCEPTUAL ONLY AND WILL BE FURTHER DEFINED AS PART OF THE SITE PLAN PROCESS.

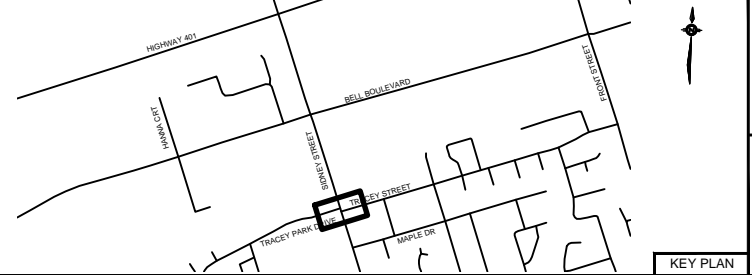
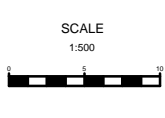
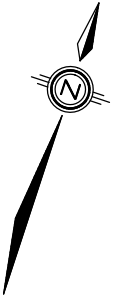
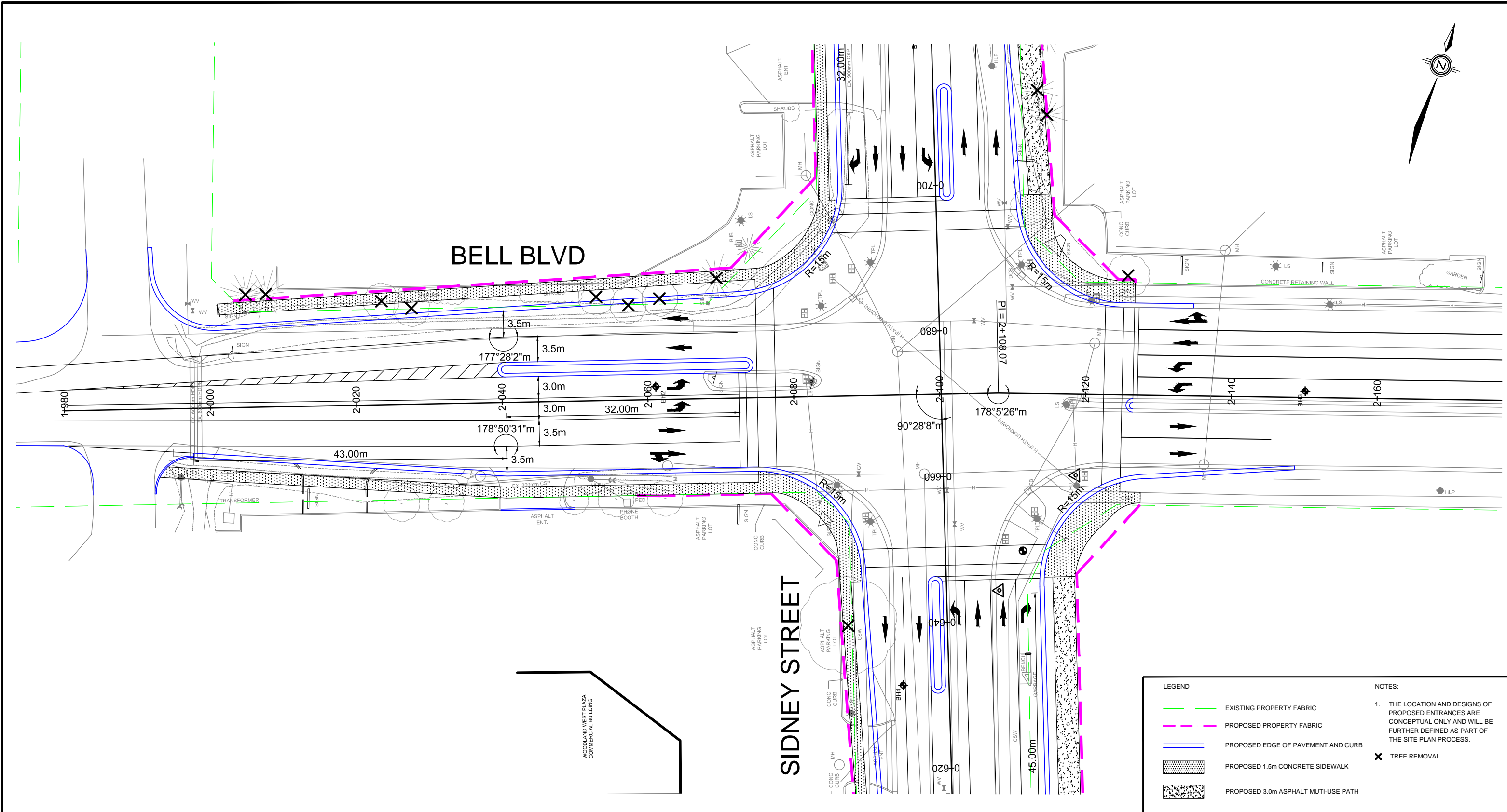


PLATE 9 RECOMMENDED PLAN - TRACEY STREET & TRACEY PARK DRIVE

SIDNEY STREET ENVIRONMENTAL ASSESSMENT STUDY &
PRELIMINARY DESIGN FROM TRACEY STREET TO BELL
BOULEVARD





LEGEND		NOTES:
	EXISTING PROPERTY FABRIC	1. THE LOCATION AND DESIGNS OF PROPOSED ENTRANCES ARE CONCEPTUAL ONLY AND WILL BE FURTHER DEFINED AS PART OF THE SITE PLAN PROCESS. X TREE REMOVAL
	PROPOSED PROPERTY FABRIC	
	PROPOSED EDGE OF PAVEMENT AND CURB	
	PROPOSED 1.5m CONCRETE SIDEWALK	
	PROPOSED 3.0m ASPHALT MULTI-USE PATH	

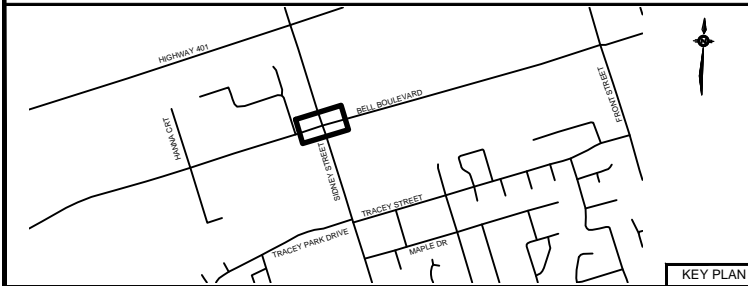
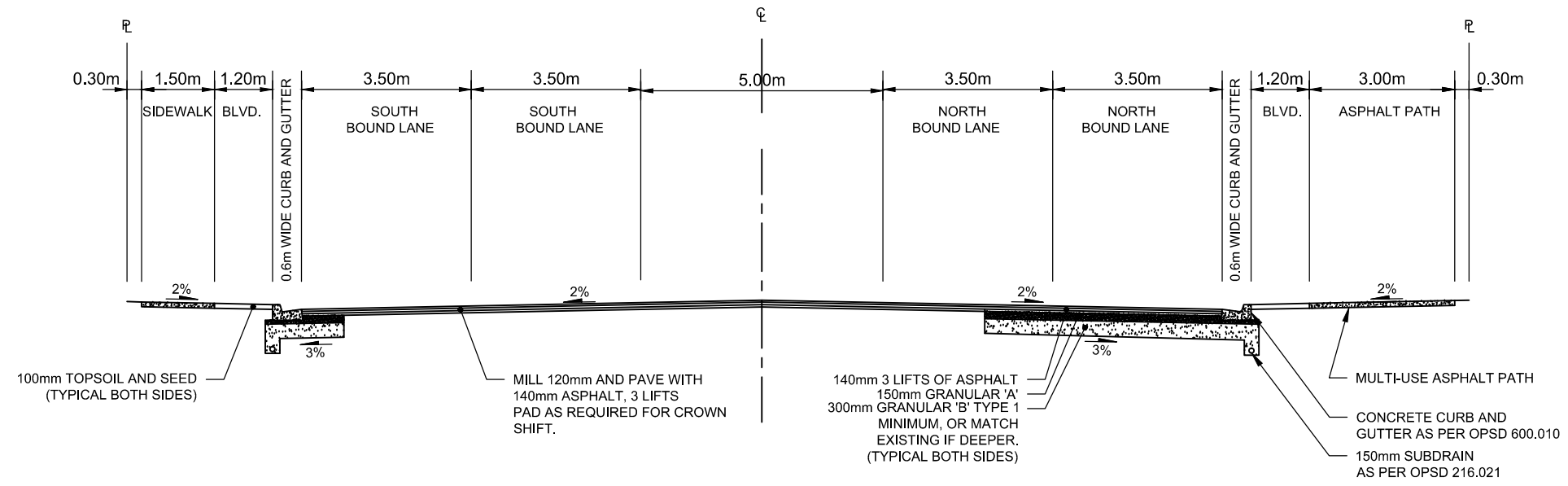


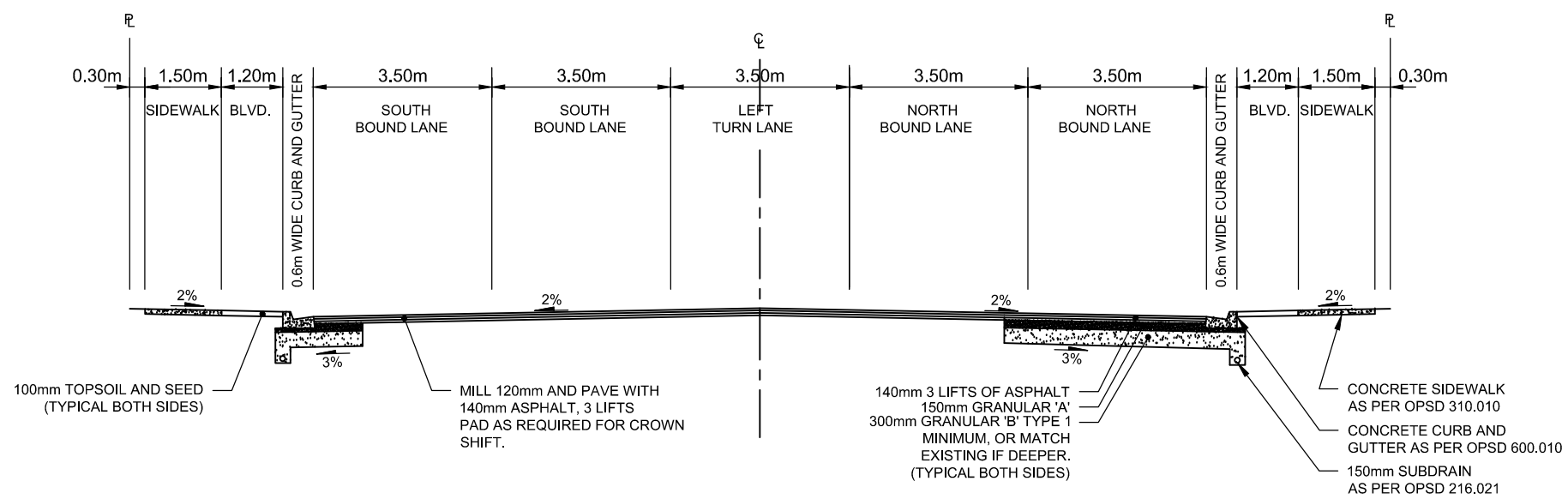
PLATE 10
RECOMMENDED PLAN - BELL BOULEVARD
 SIDNEY STREET ENVIRONMENTAL ASSESSMENT STUDY &
 PRELIMINARY DESIGN FROM TRACEY STREET TO BELL
 BOULEVARD

Partners in excellence

SCALE
1:500



**SIDNEY STREET TYPICAL SECTION
AT STATION 0+500**



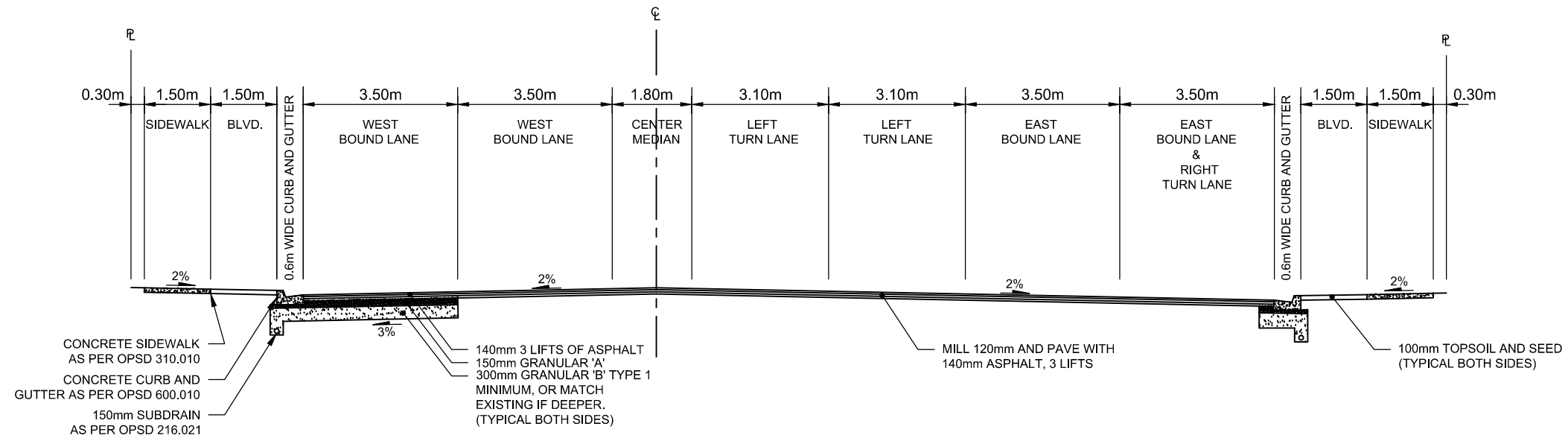
**SIDNEY STREET TYPICAL SECTION
AT STATION 0+300**

**PLATE 11
RECOMMENDED PLAN TYPICAL SECTIONS**

SIDNEY STREET ENVIRONMENTAL ASSESSMENT STUDY &
PRELIMINARY DESIGN FROM TRACEY STREET TO BELL
BOULEVARD



SCALE
N.T.S.



BELL BLVD TYPICAL SECTION

PLATE 12
RECOMMENDED PLAN TYPICAL SECTIONS

SIDNEY STREET ENVIRONMENTAL ASSESSMENT STUDY &
PRELIMINARY DESIGN FROM TRACEY STREET TO BELL
BOULEVARD



SCALE
N.T.S.