

CATCHBASIN LEAD DATA							
FROM (MAIN IF BLANK)	TO MH	SIZE	MATERIAL	LENGTH	SLOPE (START / END)	APPROX. COVER INV. AT CB OR MAIN	
CB E8	STM GBMH E5	375mm ϕ	RIB 320kPa PVC	6.46	0.50%	1.015 / 1.004	81.915
DOB E6	STM DOBMH E4	375mm ϕ	RIB 320kPa PVC	6.75	0.25%	0.937 / 0.894	81.913
							81.886

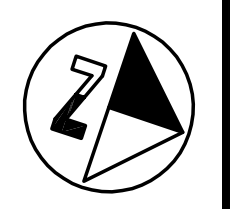
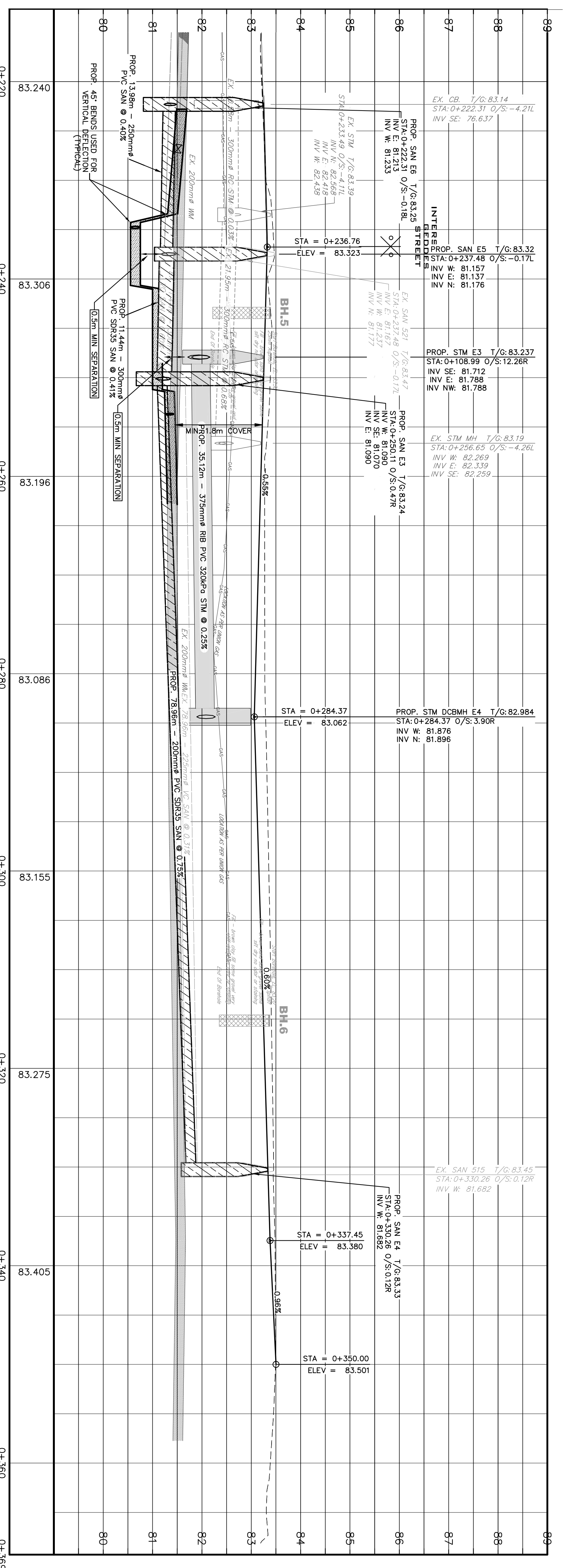
CATCHBASIN STRUCTURE DATA						
CATCHBASIN	STATION	OFFSET	SPECIFICATION	T/G ELEV	INV ELEV	INVERT
CB E8	0+233.666	-11.478 L	0P50	82.298	INV E: 81.915 INV N: 82.565	
DOB E6	0+284.370	-3.899 L	0P50	82.984	INV S: 81.913 INV SE: 81.853	
STM GBMH E5	0+279.974	4.303 R	0P50	83.270	INV SE: 81.853 INV W: 81.853	
STM DOBMH E4	0+284.370	3.901 R	0P50	82.984	INV W: 81.876 INV N: 81.886	



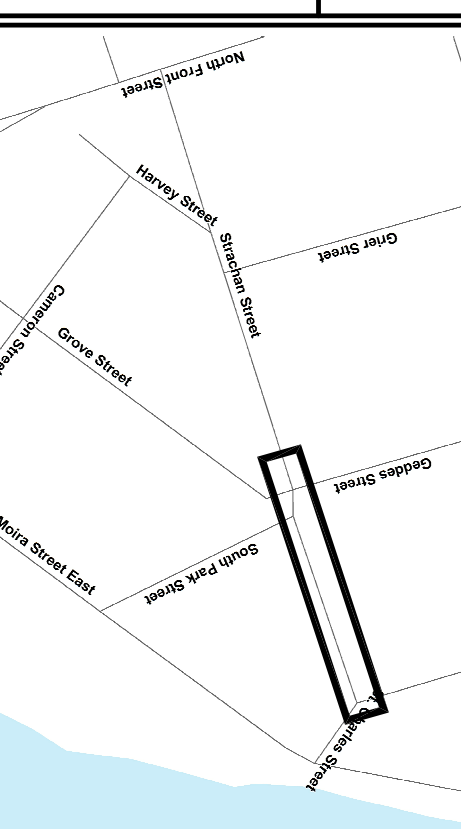
GROVE STREET
STRACHAN STREET
SOUTH PARK STREET

STRACHAN STREET

WHERE VERTICAL SEPARATION BETWEEN THE PROPOSED SANITARY MAINS AND THE EXISTING WATER MAINS IS LESS THAN 3.0m, THE EXISTING WATER MAINS SHALL BE LOWERED TO PROVIDE THE EXISTING WATER MAIN IS TO BE LOWERED PER SD-WB-1011



KEY PLAN



- GENERAL NOTES**
- UNLESS OTHERWISE NOTED, WITHIN THE LIMIT OF CONTRACT, ALL EXISTING WATERMAIN AND APPURTENANCES TO BE REMOVED.
 - UNLESS OTHERWISE NOTED, WITHIN THE LIMIT OF CONTRACT, ALL EXISTING CATCHBASINS AND LEADS TO BE REMOVED.
 - UNLESS OTHERWISE NOTED, WITHIN THE LIMIT OF CONTRACT, ALL EXISTING SANITARY MAINS, LEADS AND MAINTENANCE HOLES TO BE REMOVED.

B.M. ELEV 84.122
TOP NUT OF FIRE HYDRANT NORTH WEST OF STRACHAN AND GROVE STREET
RESIDE HOUSE 40

NO.	REVISIONS	DATE	INITIAL
1	ISSUED FOR WATERMAIN APPROVAL	08/11/17	J.B.
2	ISSUED FOR TENDER	02/09/17	J.B.
3	ISSUED FOR MCE SUBMISSION	02/24/17	J.B.

- NOTES:**
- DIMENSIONS ARE IN METRES UNLESS OTHERWISE STATED.
 - REFER TO DRAWING NO. M-23-7-3 FOR LEGEND.
 - THIS DRAWING IS TO BE READ AND UNDERSTOOD IN CONJUNCTION WITH ALL OTHER PLANS AND DOCUMENTS APPLICABLE TO THIS PROJECT.

CAUTION:
THE LOCATION OF UTILITIES IS APPROXIMATE ONLY, AND THE EXACT LOCATION SHOULD BE DETERMINED BY CONSULTING THE MUNICIPAL AUTHORITY AND UTILITIES COMPANIES. THE ENGINEER, ARCHITECT AND CONTRACTOR SHALL BE RESPONSIBLE FOR THE LOCATION AND STATUS OF UTILITIES AND SHALL BE RESPONSIBLE FOR ADEQUATE PROTECTION OF PLANT AND EQUIPMENT FROM DAMAGE.

CITY OF BELLEVILLE
ENGINEERING & PLANNING DEPARTMENT
SERVICES DEPARTMENT

CONTRACT 2017-09
STRACHAN STREET
PLAN/PROFILE
STATION 0+220 TO 0+350

DATE: 02/08/2017
SCALE: 1:250
DESIGN: AWG
DRAWN: ACAD
APPROVED: RF

CATCHBASIN LEAD DATA						
FROM (MAIN IF BLANK)	TO MH	SIZE	MATERIAL	LENGTH	SLOPE (START / END)	APPROX. COVER INV. AT CB OR MAIN
CB E8	STM GBMH E5	375mm ϕ	RIB 320kPa PVC	6.46	0.50%	1.015 / 1.004
DOB E6	STM DOBMH E4	375mm ϕ	RIB 320kPa PVC	6.75	0.25%	0.937 / 0.894
						81.915
						81.883
						81.896

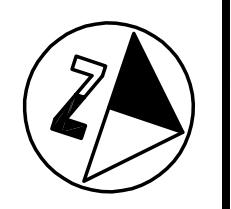
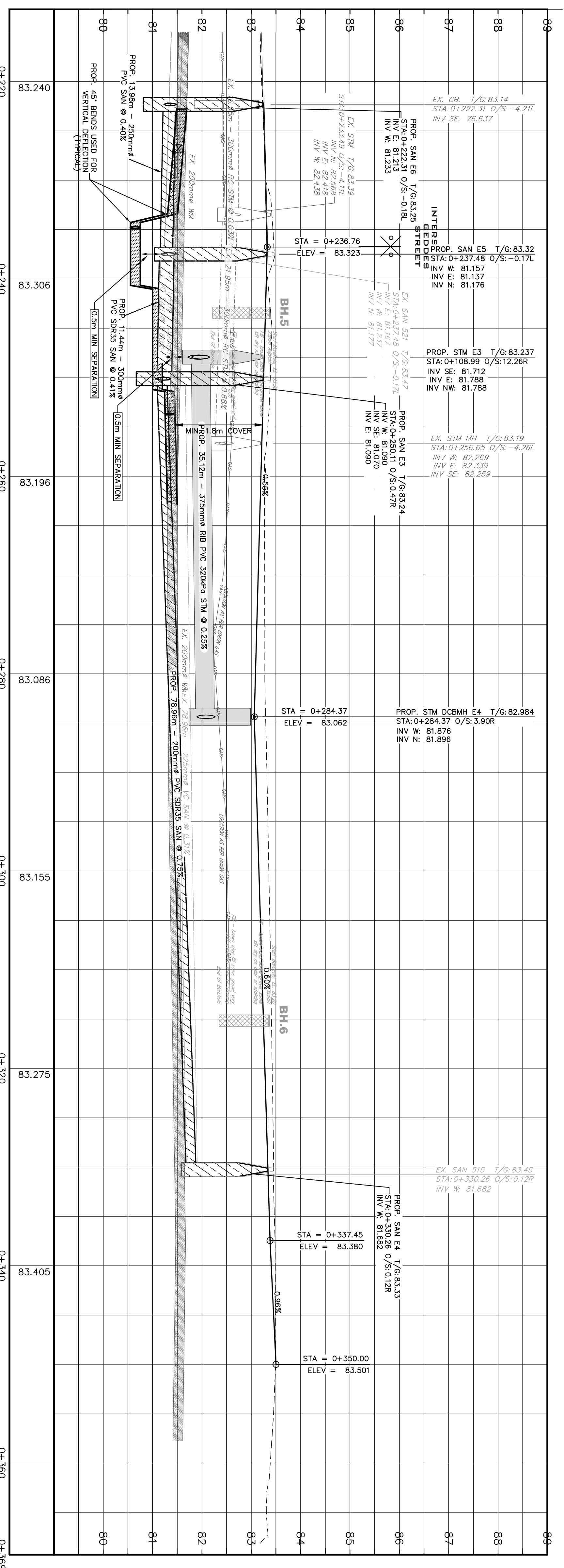
CATCHBASIN STRUCTURE DATA						
CATCHBASIN	STATION	OFFSET	SPECIFICATION	T/G ELEV	INV ELEV	INVERT (START / END)
CB E8	0+233.666	-11.478 L	0P50	82.298	INV E: 81.915 INV N: 82.565	
DOB E6	0+284.370	-3.899 L	0P50	82.984	INV S: 81.913 INV SE: 81.853	
STM GBMH E5	0+279.974	4.303 R	0P50	83.270	INV W: 81.853 INV N: 81.888	
STM DOBMH E4	0+284.370	3.901 R	0P50	82.984	INV W: 81.876 INV N: 81.888	



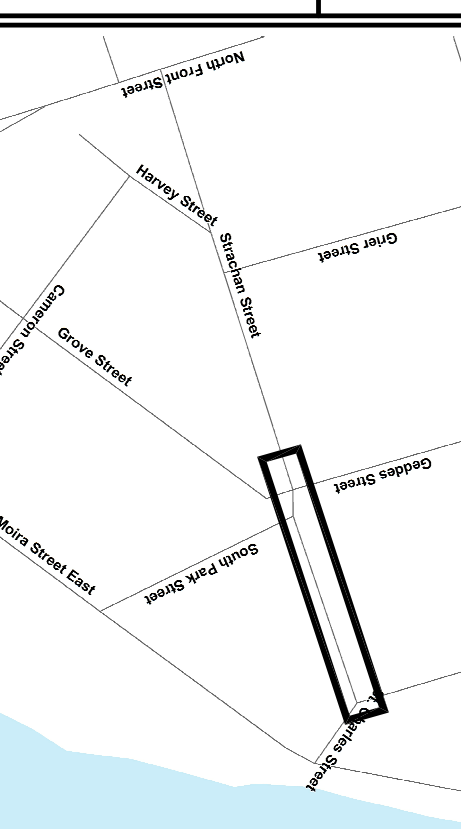
GROVEDES STREET
SOUTH PARK STREET

STRACHAN STREET

WHERE VERTICAL SEPARATION BETWEEN THE PROPOSED SANITARY MAINS AND THE EXISTING SANITARY MAINS IS LESS THAN 3.0m, THE EXISTING MAINS SHALL BE LOWERED TO PROVIDE THE EXISTING WATERMAIN IS TO BE LOWERED PER SD-WB-1011



KEY PLAN



- GENERAL NOTES**
- UNLESS OTHERWISE NOTED, WITHIN THE LIMIT OF CONTRACT, ALL EXISTING WATERMAIN AND APPURTENANCES TO BE REMOVED.
 - UNLESS OTHERWISE NOTED, WITHIN THE LIMIT OF CONTRACT, ALL EXISTING CATCHBASINS AND LEADS TO BE REMOVED.
 - UNLESS OTHERWISE NOTED, WITHIN THE LIMIT OF CONTRACT, ALL EXISTING SANITARY MAINS, LEADS AND MAINTENANCE HOLES TO BE REMOVED.

B.M. ELEV 84.122
TOP NUT OF FIRE HYDRANT NORTH WEST OF STRACHAN AND GROVEDES STREET
RESIDE HOUSE 40

NO.	REVISIONS	DATE	INITIAL
1	ISSUED FOR WATERMAIN APPROVAL	08/11/17	J.B.
2	ISSUED FOR TENDER	02/09/17	J.B.
3	ISSUED FOR MCE SUBMISSION	02/24/17	J.B.

- NOTES:**
- DIMENSIONS ARE IN METRES UNLESS OTHERWISE STATED.
 - REFER TO DRAWING NO. M-23-7-3 FOR LEGEND.
 - THIS DRAWING IS TO BE READ AND UNDERSTOOD IN CONJUNCTION WITH ALL OTHER PLANS AND DOCUMENTS APPLICABLE TO THIS PROJECT.

CAUTION:
THE LOCATION OF UTILITIES IS APPROXIMATE ONLY, AND THE EXACT LOCATION SHOULD BE DETERMINED BY CONSULTING THE MUNICIPAL AUTHORITY AND UTILITIES COMPANIES. THE ENGINEER DOES NOT WARRANT THE RESPONSIBILITY AND SHALL BE RESPONSIBLE FOR ADEQUATE PROTECTION OF PLANT AND EQUIPMENT FROM DAMAGE.

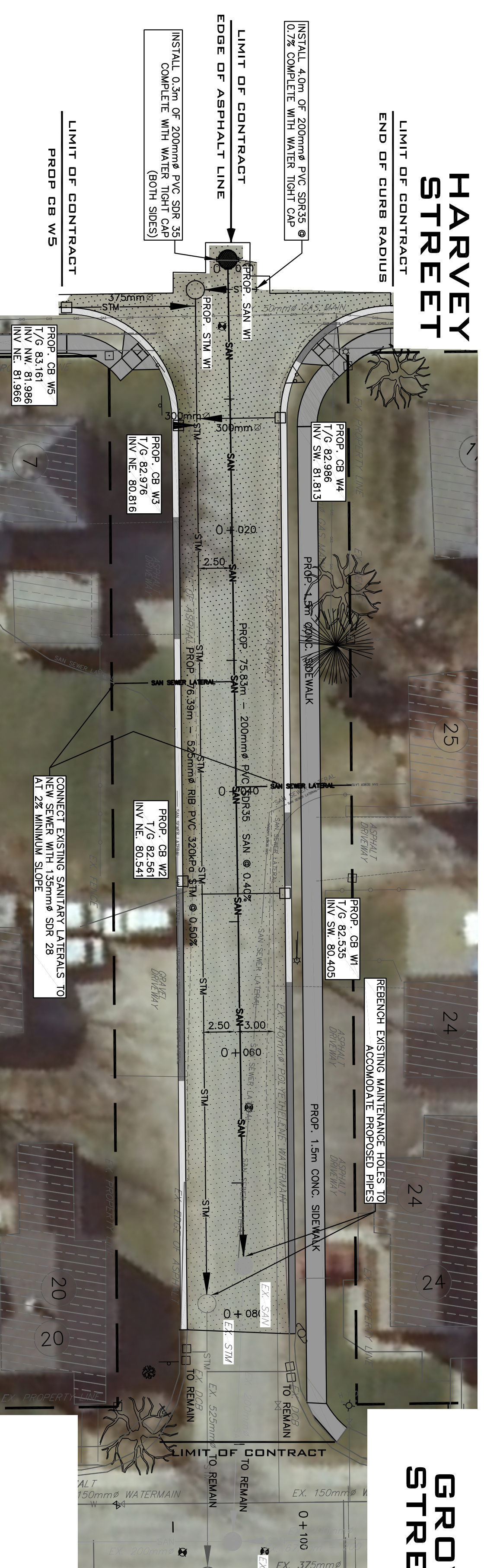
DATE: 02/08/2017
SCALE: 1:250
DESIGN: AWG
DRAWN: ACAD
APPROVED: RF

CITY OF BELLEVILLE
ENGINEERING & PLANNING DEPARTMENT
SERVICES DEPARTMENT

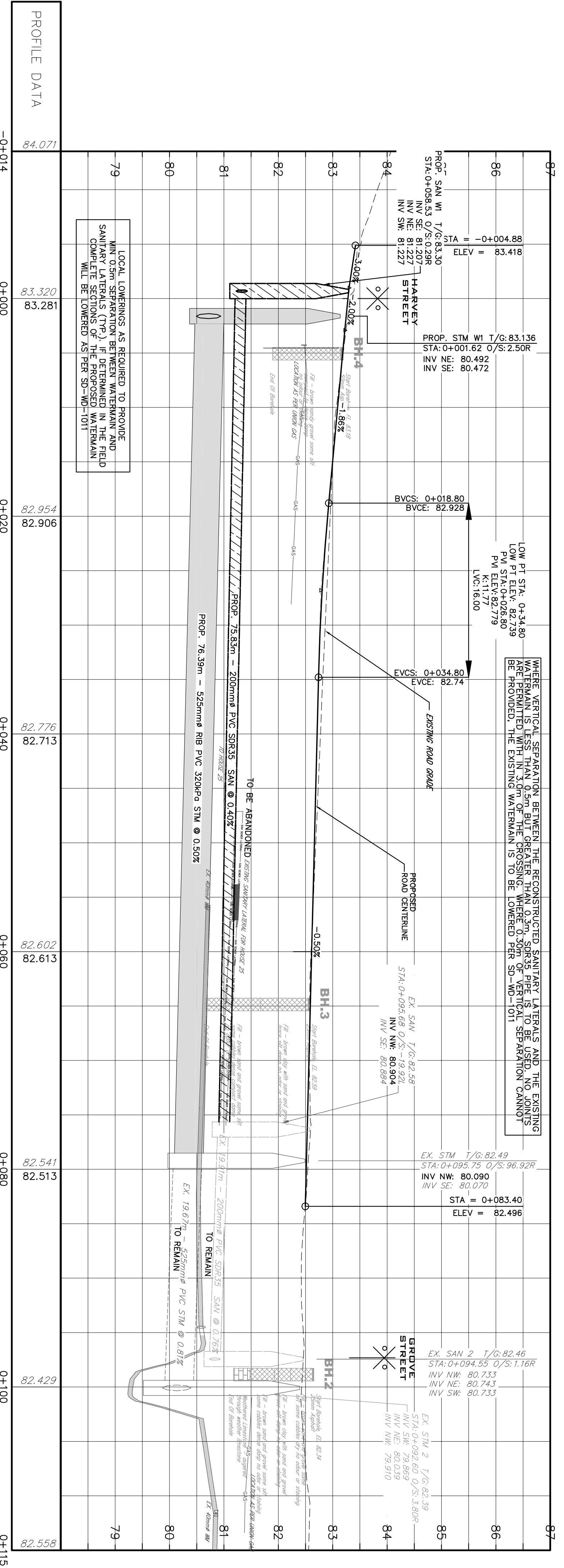
CONTRACT 2017-09
STRACHAN STREET
PLAN/PROFILE
STATION 0+220 TO 0+350

CATCHBASIN LEAD DATA								
FROM (MAIN IF BLANK)	TO MH	SIZE	MATERIAL	LENGTH	SLOPE (START / END)	APPROX. COVER (START / END)	INV. AT CB	INV. AT MH
CB W1		300mm \varnothing	RIB 320kpa PVC	6.40	0.75%	1.926 / 1.983	80.405	80.357
CB W2		300mm \varnothing	RIB 320kpa PVC	1.40	13.73%	1.794 / 1.999	80.541	80.349
CB W3		300mm \varnothing	RIB 320kpa PVC	1.41	20.00%	1.839 / 2.168	80.816	80.533
CB W4		300mm \varnothing	RIB 320kpa PVC	6.09	20.92%	0.849 / 2.171	81.813	80.536
CB W5		375mm \varnothing	RIB 320kpa PVC	9.57	14.89%	0.838 / 2.280	81.966	80.541

CATCHBASIN STRUCTURE DATA					
CATCHBASIN	STATION	OFFSET	SPECIFICATION	T/G ELEV	INV ELEV
CB W1	0+047.866	-3.900 L	0P9D	82.535	INV SW: 80.405
CB W2	0+046.866	3.900 R	0P9D	82.561	INV NE: 80.541
CB W3	0+011.978	3.900 R	0P9D	82.976	INV NE: 80.816
CB W4	0+011.466	-3.900 L	0P9D	82.986	INV SW: 81.813
CB W5	0+046.172	3.900 R	0P9D	83.161	INV NW: 81.986

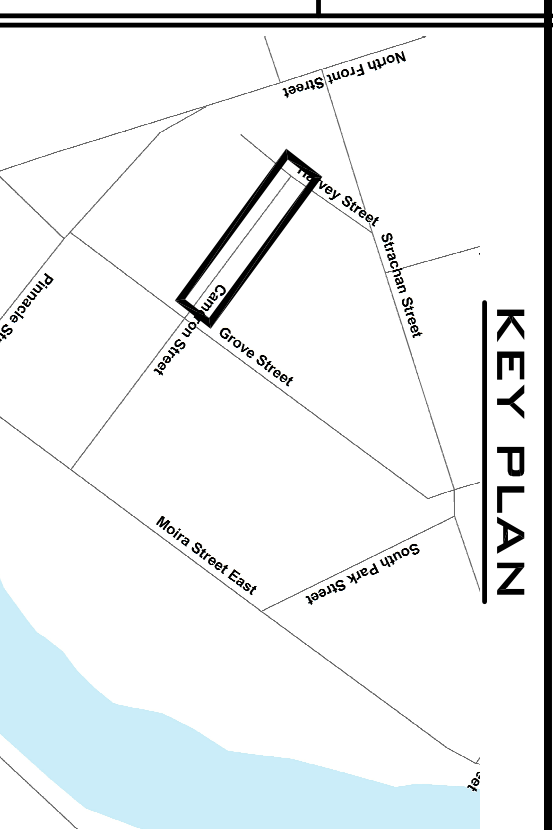
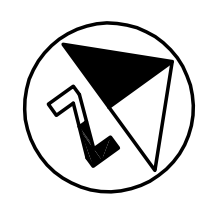


CAMERON STREET



LOCAL LOWERINGS AS REQUIRED TO PROVIDE SANITARY LATERALS (T/P) IF DETERMINED IN THE FIELD COMPLETE SECTIONS OF THE PROPOSED WATERMAIN WILL BE LOWERED AS PER SP-W0-101

WHERE VERTICAL SEPARATION BETWEEN THE RECONSTRUCTED SANITARY LATERALS AND THE EXISTING WATERMAIN IS LESS THAN 1.0m OF THE CROSSING, WHERE 0.30m OF VERTICAL SEPARATION CANNOT BE PROVIDED, THE EXISTING WATERMAIN IS TO BE LOWERED PER SP-W0-101



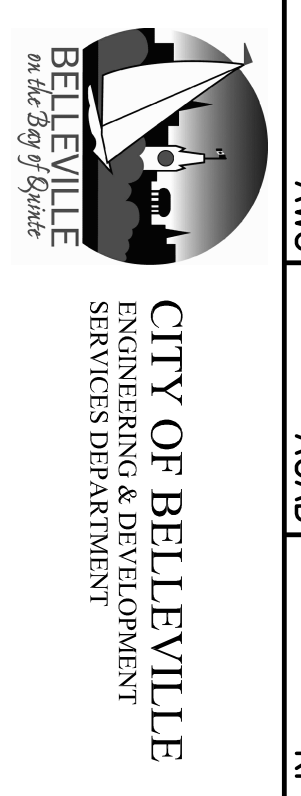
- GENERAL NOTES**
- UNLESS OTHERWISE NOTED, WITHIN THE LIMIT OF CONTRACT, ALL EXISTING WATERMAIN AND APPURTENANCES TO BE REMOVED.
 - UNLESS OTHERWISE NOTED, WITHIN THE LIMIT OF CONTRACT, ALL EXISTING CATCHBASINS AND LEADS TO BE REMOVED.
 - UNLESS OTHERWISE NOTED, WITHIN THE LIMIT OF CONTRACT, ALL EXISTING SANITARY SEWER PIPE AND MAINTENANCE HOLES TO BE REMOVED.

B.M. ELEV 83.216
TOP NUT OF FIRE HYDRANT, LOCATED ON THE NORTH EAST CORNER OF GROVE AND CAMERON, IN FRONT OF HOUSE 24

NO.	REVISIONS	DATE	INITIAL
1	ISSUED FOR MCE SUBMISSION	02/24/17	J.B.
2	ISSUED FOR TENDER	02/09/17	J.B.
3	ISSUED FOR WATERMAIN APPROVAL	08/11/17	J.B.

- NOTES:**
- DIMENSIONS ARE IN METRES UNLESS OTHERWISE STATED.
 - REFER TO DRAWING NO. M-23-7-3 FOR LEGEND.
 - THIS DRAWING IS TO BE READ AND UNDERSTOOD IN CONJUNCTION WITH ALL OTHER PLANS AND DOCUMENTS APPLICABLE TO THIS PROJECT.

CAUTION:
THE LOCATION OF UTILITIES IS APPROXIMATE ONLY, AND THE EXACT LOCATION SHOULD BE DETERMINED BY CONSULTING THE MUNICIPAL AUTHORITY AND UTILTY COMPANIES. THE MUNICIPAL AUTHORITY AND UTILTY COMPANIES SHALL BE RESPONSIBLE FOR LOCATION AND STATUS OF UTILITIES AND SHALL BE RESPONSIBLE FOR ADEQUATE PROTECTION OF PLANT AND EQUIPMENT FROM DAMAGE.

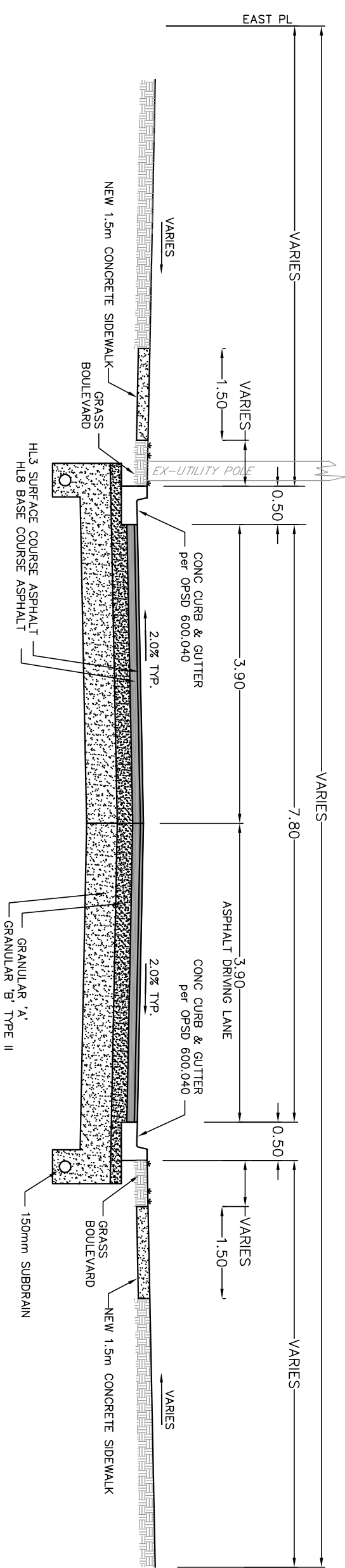


CITY OF BELLEVILLE
ENGINEERING & DEVELOPMENT
SERVICES DEPARTMENT

CONTRACT 2017-09
CAMERON STREET
PLAN/PROFILE
STATION -0+014 to 0+115

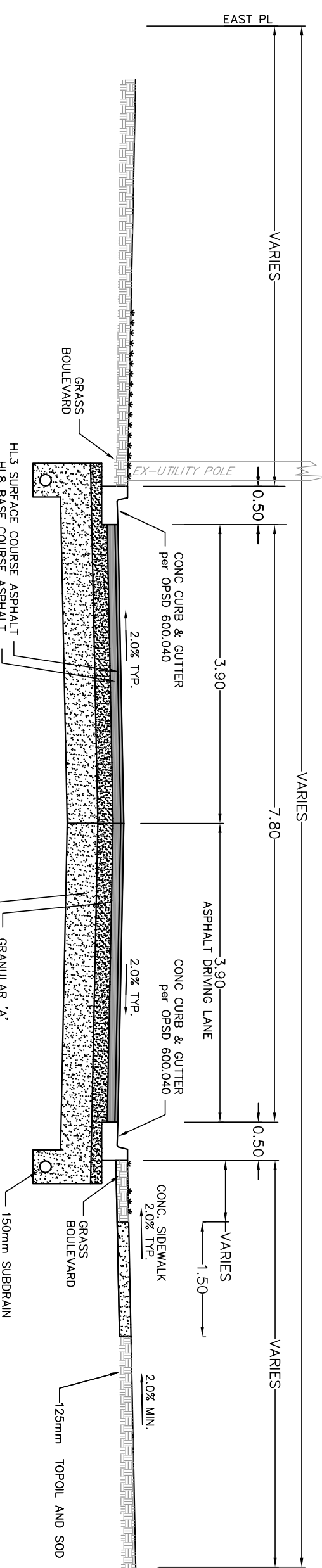
SOUTH PARK STREET

FROM STATION 0+00.00 TO 0+120.00



CAMERON STREET

FROM STATION 0+025.95 TO 0+93.62

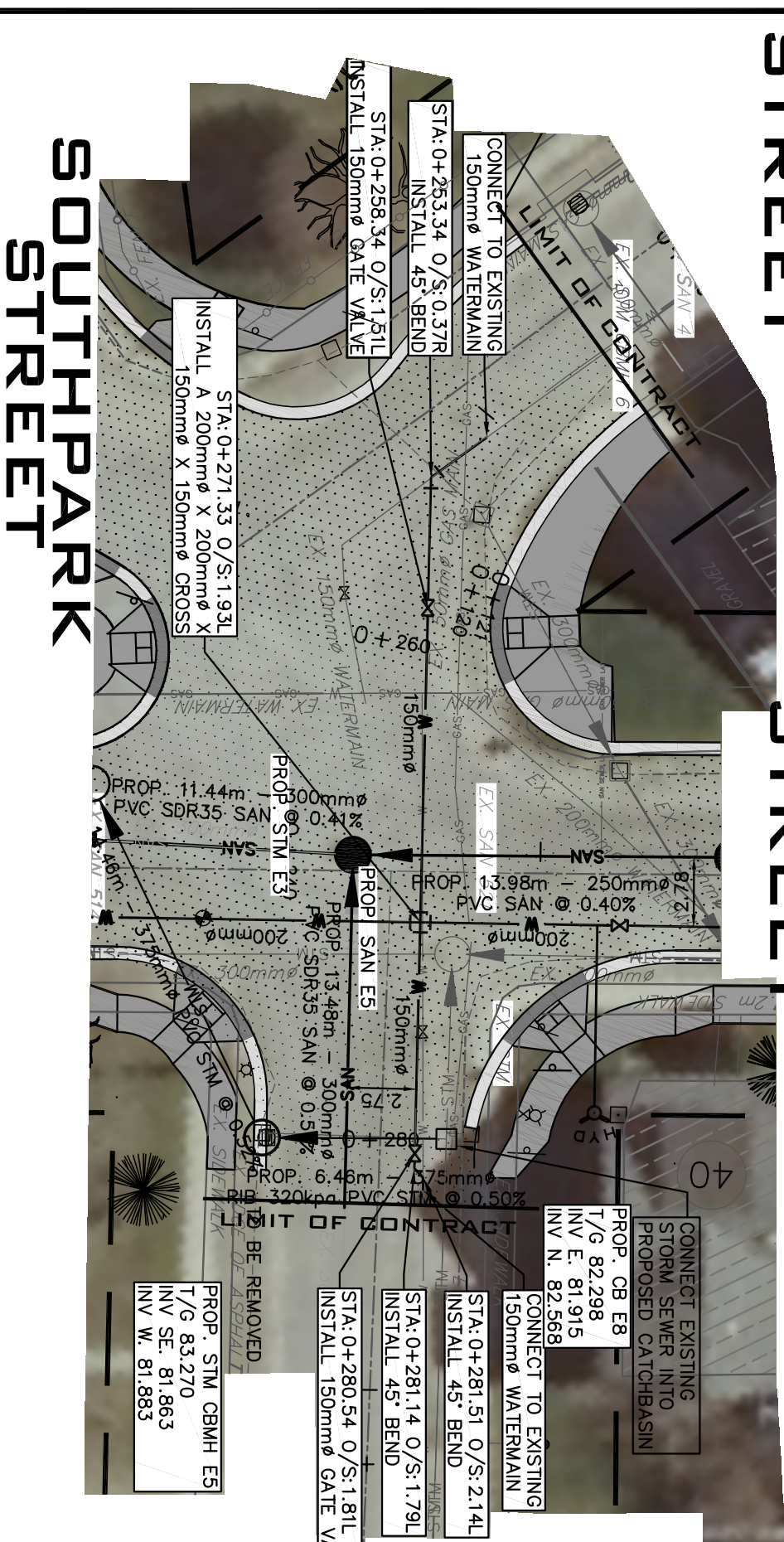


LEGEND

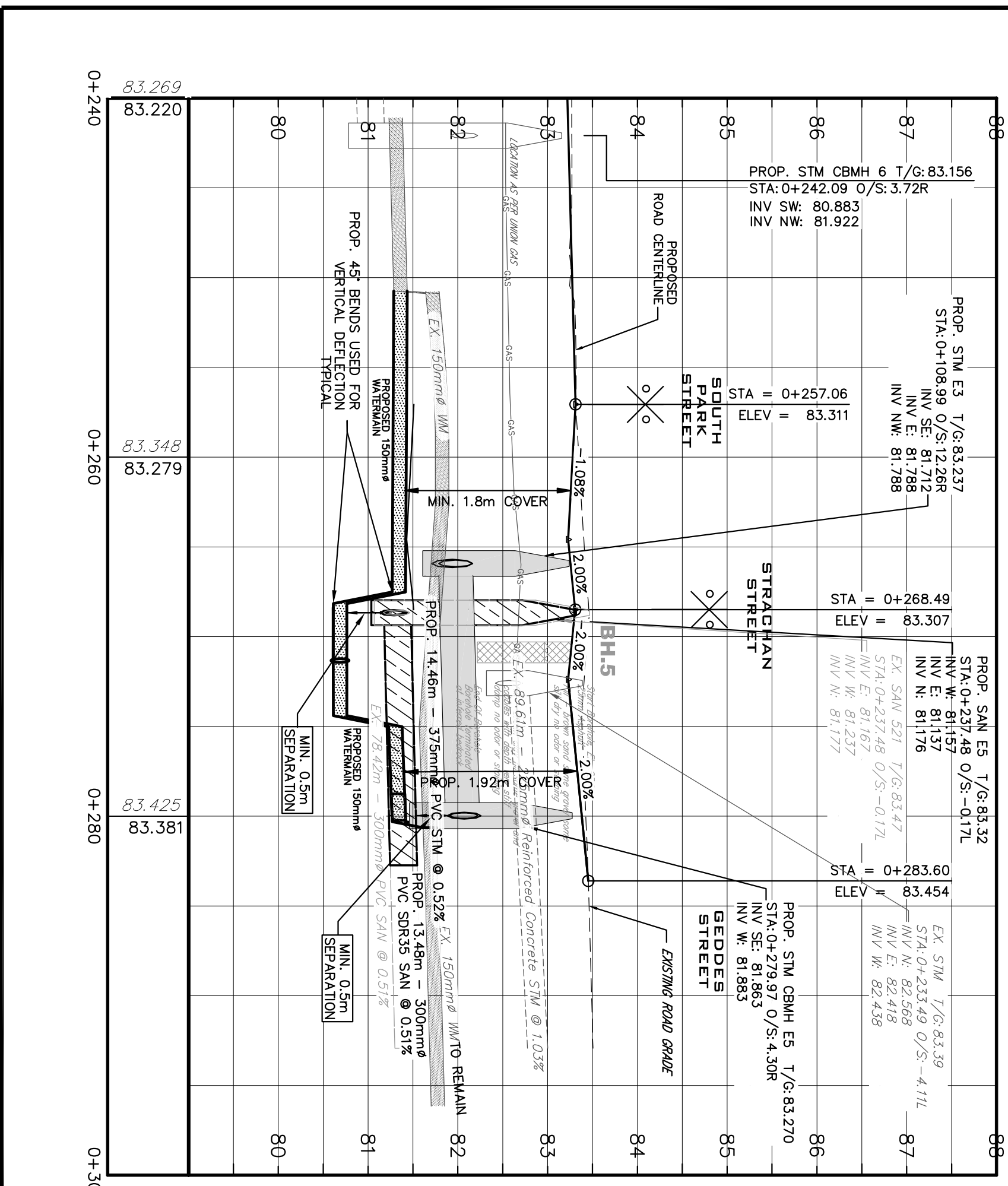
EXISTING	DESCRIPTION	PROPOSED
W	WATERMAIN	W
SAW	SANITARY SEWER	SAW
STM	STORM SEWER	STM
GAS	NATURAL GAS	GAS
B	BELL DUCT/CABLE	B
EX SAN 796	SAN. MAINT. HOLE	PROP. SAN 2
EX STM 353	STM. MAINT. HOLE	PROP. STM 2
EX CBMH2	CATCHBASIN MH	PROP. CBMH2
EX CB5	CATCHBASIN	PROP. CB5
EX DCB4	DOUBLE CATCHBASIN	PROP. DCB4
EX DICB6	DITCH INLET CATCHBASIN	PROP. DICB6
EX W	WATER VALVE	W
EX W	WATERMAIN REDUCER	W
EX W	FIRE HYDRANT	W
EX W	LIGHT STANDARD	W
EX W	CONIFEROUS TREE	W
EX W	DECIDUOUS TREE	W
EX W	SIGN	W
EX W	UTILITY POLE	W
EX W	GUY WIRE	W
EX W	TRAFFIC HAND HOLE	W
EX W	BORE HOLE	W
EX W	BELL MH	W
EX W	BELL PEDESTAL	W
EX W	CABLE PEDESTAL	W
EX W	GAS VALVE	W
EX W	CURB STOP	W
EX W	SURVEY BAR	W
EX W	CHAINLINK FENCE	W
EX W	BOARD FENCE	W
EX W	BOLLARD	W

GROVE STREET

STRACHAN STREET

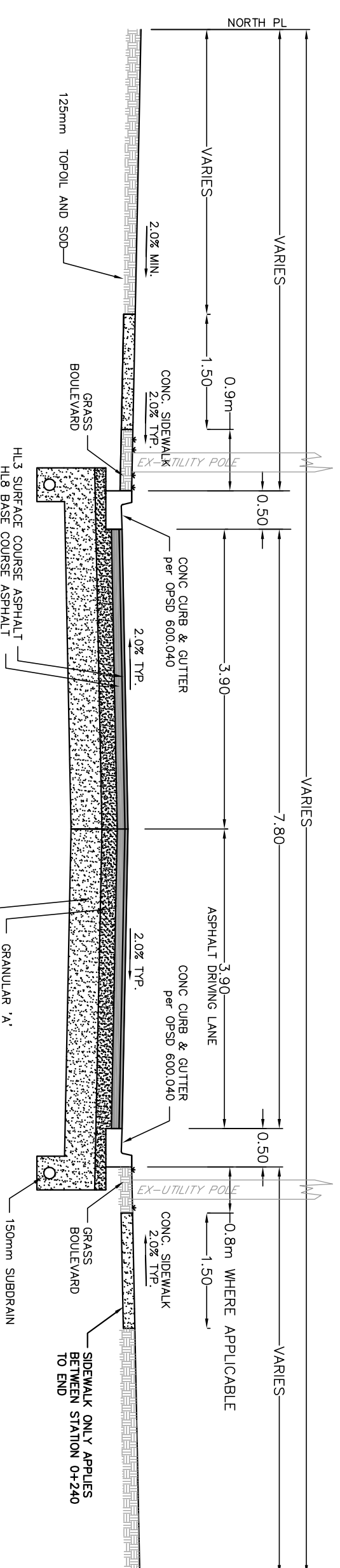


GEDDES STREET

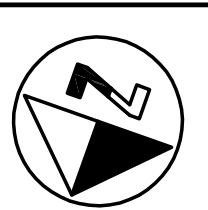


STRACHAN STREET

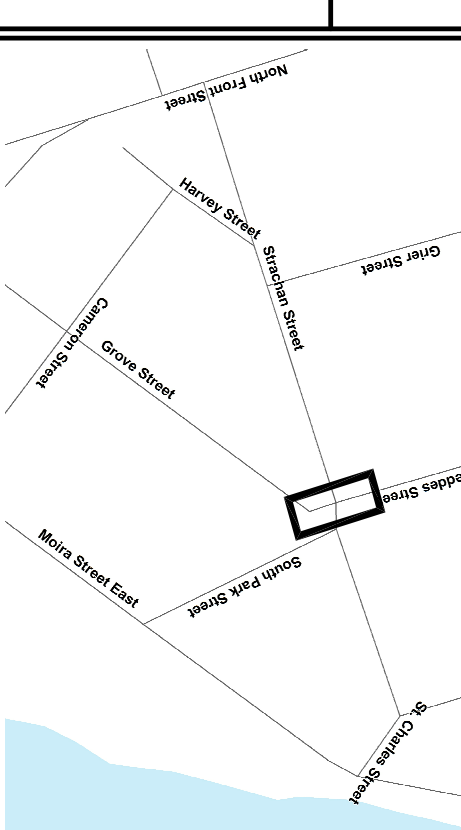
FROM STATION 0+220.00 TO 0+350.00



WHERE VERTICAL SEPARATION BETWEEN THE RECONSTRUCTED SANITARY LATERALS AND THE EXISTING WATERMAIN IS LESS THAN 0.30m BUT GREATER THAN 0.20m, SAND PAPER IS TO BE USED. NO JOINTS BE PROVIDED. THE EXISTING WATERMAIN IS TO BE LOWERED PER SD-WD-101.



KEY PLAN



GENERAL NOTES

- UNLESS OTHERWISE NOTED, WITHIN THE LIMIT OF CONTRACT, ALL EXISTING WATERMAIN AND APPURTENANCES TO BE REMOVED.
- UNLESS OTHERWISE NOTED, WITHIN THE LIMIT OF CONTRACT, ALL EXISTING CATCHBASINS AND LEADS TO BE REMOVED.
- UNLESS OTHERWISE NOTED, WITHIN THE LIMIT OF CONTRACT, ALL EXISTING SANITARY SEWER PIPES AND MAINTENANCE HOLES TO BE REMOVED.

● B.M. ELEV 84.122
TOP NUT OF FIRE HYDRANT NORTH WEST OF STRACHAN AND GEDDES STREET

● B.M. ELEV 84.011
TOP NUT OF FIRE HYDRANT SOUTH WEST SIDE OF ST CHARLES STREET AND WEST MORKA STREET BESIDE HOUSE 82

NO.	REVISIONS	DATE	INITIAL
1	ISSUED FOR M&E SUBMISSION	02/24/17	J.B.
2	ISSUED FOR TENDER	02/09/17	J.B.
3	ISSUED FOR WATERMAIN APPROVAL	08/11/17	J.B.

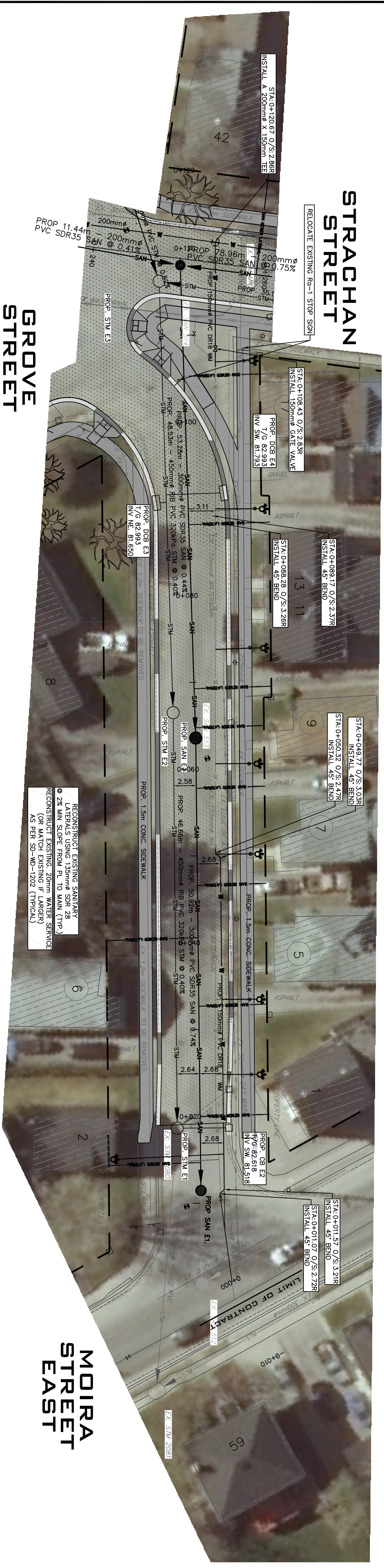
NOTES:
1. DIMENSIONS ARE IN METRES UNLESS OTHERWISE STATED.
2. REFER TO DRAWING NO. M-206-82-3 FOR LEGEND.
3. THIS DRAWING IS TO BE READ AND UNDERSTOOD IN CONJUNCTION WITH ALL OTHER PLANS AND DOCUMENTS APPLICABLE TO THIS PROJECT.



CONTRACT 2017-09
STRACHAN STREET
PLAN/PROFILE
GEDDES STREET STATION 0+240 TO 0+300
NOTES AND DETAILS

FROM (MAIN IF BLANK)	TO MH	SIZE	MATERIAL	LENGTH	SLOPE (START / END)	APPROX COVER	INV. AT OB OR MAIN	INV. AT MH
OB E2	STM E1	300mm \varnothing	RIB 320ga PVC	5.08	1.11%	0.798 / 0.904	81.518	81.462
DOB E3		375mm \varnothing	RIB 320ga PVC	0.83	18.08%	1.202 / 1.352	81.650	81.500
DOB E4		375mm \varnothing	RIB 320ga PVC	6.31	2.21%	0.915 / 1.209	81.793	81.653

CATCHBASIN	STATION	OFFSET	SPECIFICATION	T/G ELEV	INV ELEV
OB E2	0+018.455	3.794 R	0P50	82.618	INV SW: 81.518
DOB E3	0+091.058	-3.900 L	0P50	82.993	INV NE: 81.650
DOB E4	0+091.058	3.900 R	0P50	82.993	INV SW: 81.793

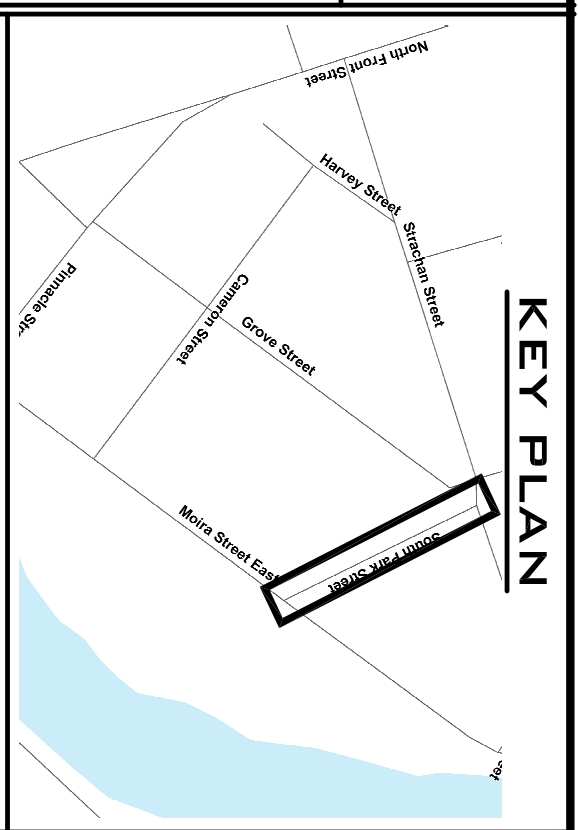
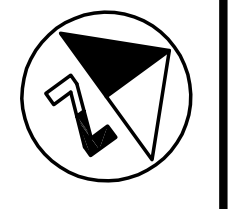


STRACHAN STREET

GROVE STREET

MOIRA STREET EAST

SOUTH PARK STREET



- ### GENERAL NOTES
- UNLESS OTHERWISE NOTED, WITHIN THE LIMIT OF CONTRACT, ALL EXISTING WATERMAIN AND APPURTENANCES TO BE REMOVED.
 - UNLESS OTHERWISE NOTED, WITHIN THE LIMIT OF CONTRACT, ALL EXISTING CATCHBASINS AND LEADS TO BE REMOVED.
 - UNLESS OTHERWISE NOTED, WITHIN THE LIMIT OF CONTRACT, ALL EXISTING 200mm SDR 35 FIRE AND MAINTENANCE HOLES TO BE REMOVED.

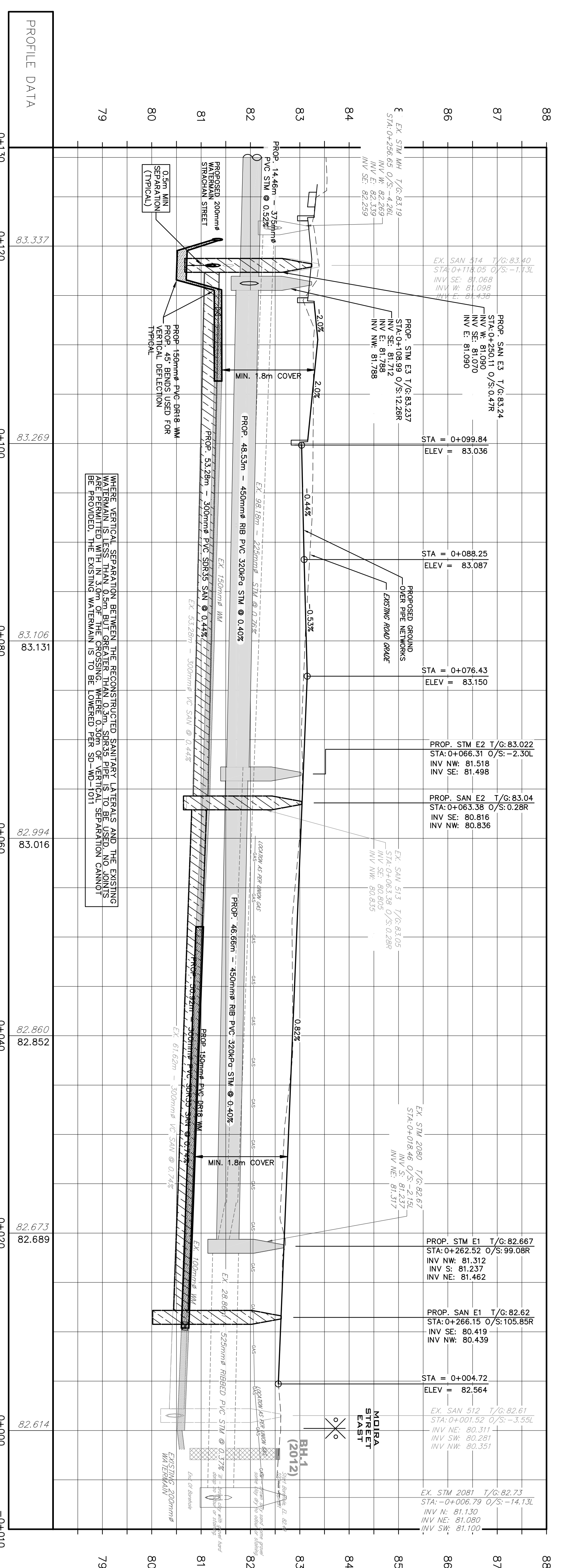
B.M. ELEV 84.122
TOP NUT OF FIRE HYDRANT NORTH WEST CORNER OF STRACHAN STREET AND GROVE STREET

NO.	REVISIONS	DATE	INITIAL
1	ISSUED FOR MAKE SUBMISSION	02/24/17	J.B.
2	ISSUED FOR TENDER	02/09/17	J.B.
3	ISSUED FOR WATERMAIN APPROVAL	08/11/17	J.B.

- NOTES:
- DIMENSIONS ARE IN METRES UNLESS OTHERWISE STATED.
 - REFER TO DRAWING NO. M-23-7-3 FOR LEGEND.
 - THIS DRAWING IS TO BE READ AND UNDERSTOOD IN CONJUNCTION WITH ALL OTHER PLANS AND DOCUMENTS APPLICABLE TO THIS PROJECT.

CAUTION:

THE LOCATION OF UTILITIES IS APPROXIMATE ONLY, AND THE EXACT LOCATION SHOULD BE DETERMINED BY CONSULTING THE MUNICIPAL AUTHORITIES AND UTILTY COMPANIES. THE CONTRACTOR SHALL BE RESPONSIBLE TO PROVIDE THE LOCATION AND STATUS OF UTILITIES AND SHALL BE RESPONSIBLE FOR ADEQUATE PROTECTION OF PLANT AND EQUIPMENT FROM DAMAGE.



WHERE VERTICAL SEPARATION BETWEEN THE RECONSTRUCTED SANITARY LATERALS AND THE EXISTING WATERMAIN IS LESS THAN 0.3m, BUT GREATER THAN 0.2m, SDR 35 PIPING TO BE USED. NO JOINTS BE PROVIDED. THE EXISTING WATERMAIN IS TO BE LOWERED PER SD-WO-1011 SEPARATION (SHOWN).

CITY OF BELLEVILLE
ENGINEERING AND DEVELOPMENT SERVICES DEPARTMENT

CONTRACT 2017-09
SOUTHPARK STREET
PLAN/PROFILE
STATION -0+010 to 0+130

DATE: 02/08/2017
SCALE: 1:250
DESIGN: AWG
ACAD: APPROVED
RF

DRAWING NO. M-23-6
SHEET NO. 4 OF 4