

CITY OF BELLEVILLE
ENGINEERING & DEVELOPMENT SERVICES

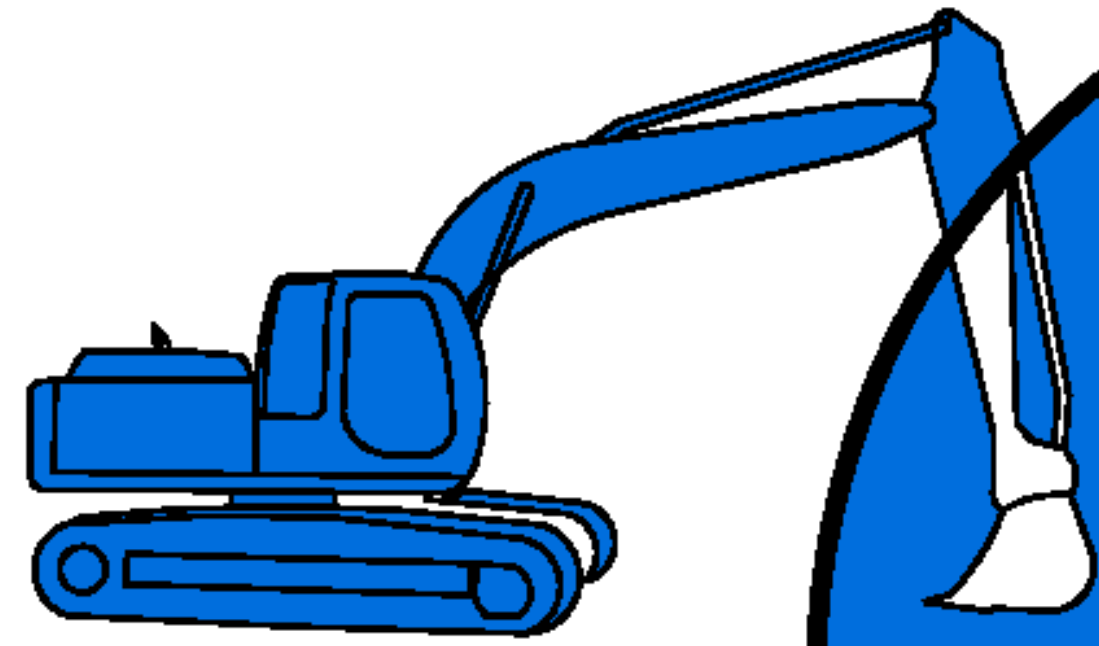
PUBLIC INFORMATION CENTRE

REID STREET AND JONES STREET

WATERMAIN REPLACEMENT

INVESTING IN OUR COMMUNITY



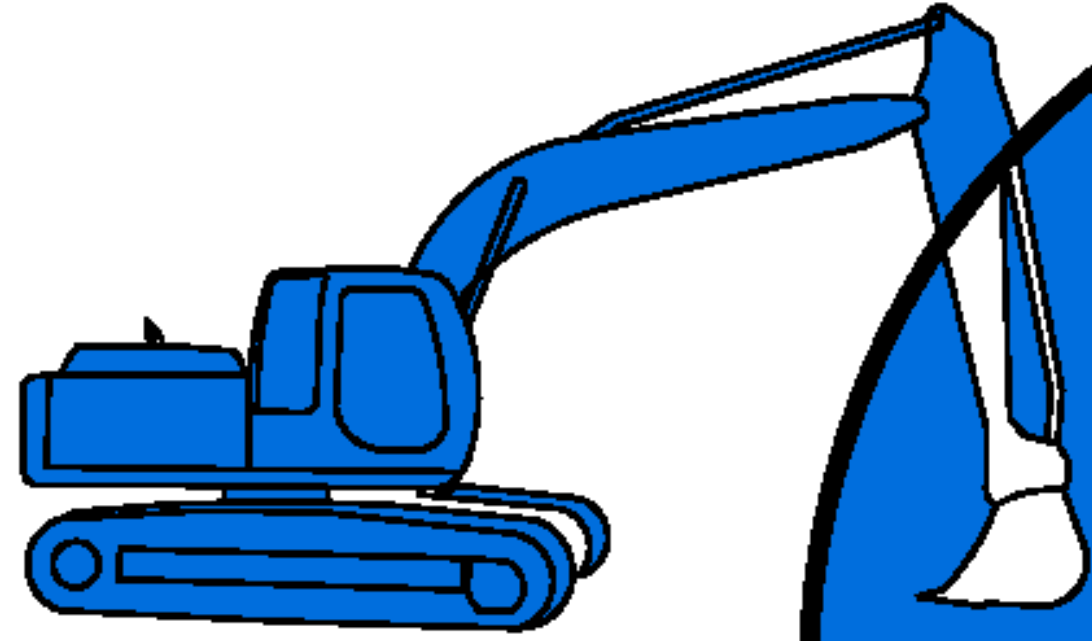


PUBLIC INFORMATION CENTRE PROJECT INFORMATION

- **WATERMAIN ON REID STREET WILL BE REPLACED FROM CANNIFTON ROAD TO THE STREET'S WEST END.**
- **WATERMAIN ON JONES STREET WILL BE REPLACED.**
- **REID AND JONES STREETS WILL BE RESURFACED WITH NEW ASPHALT.**

INVESTING IN OUR COMMUNITY



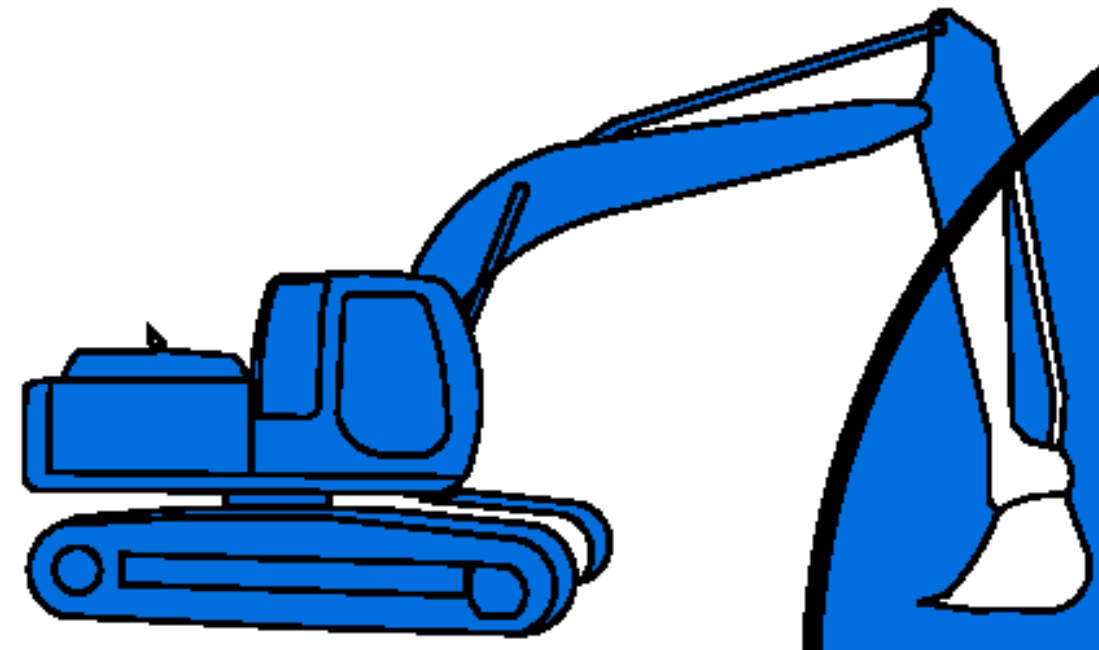


PUBLIC INFORMATION CENTRE PROJECT INFORMATION

- **TEMPORARY WATERMAIN WILL BE INSTALLED ON REID AND JONES STREETS. CONNECTIONS TO RESIDENCES WILL BE MADE VIA OUTSIDE TAPS.**
- **NEW WATER SERVICES WILL BE INSTALLED TO THE PROPERTY LINE.**
- **SANITARY SEWER AND SERVICES WILL BE INSPECTED AND REPAIRED AS REQUIRED.**

INVESTING IN OUR COMMUNITY



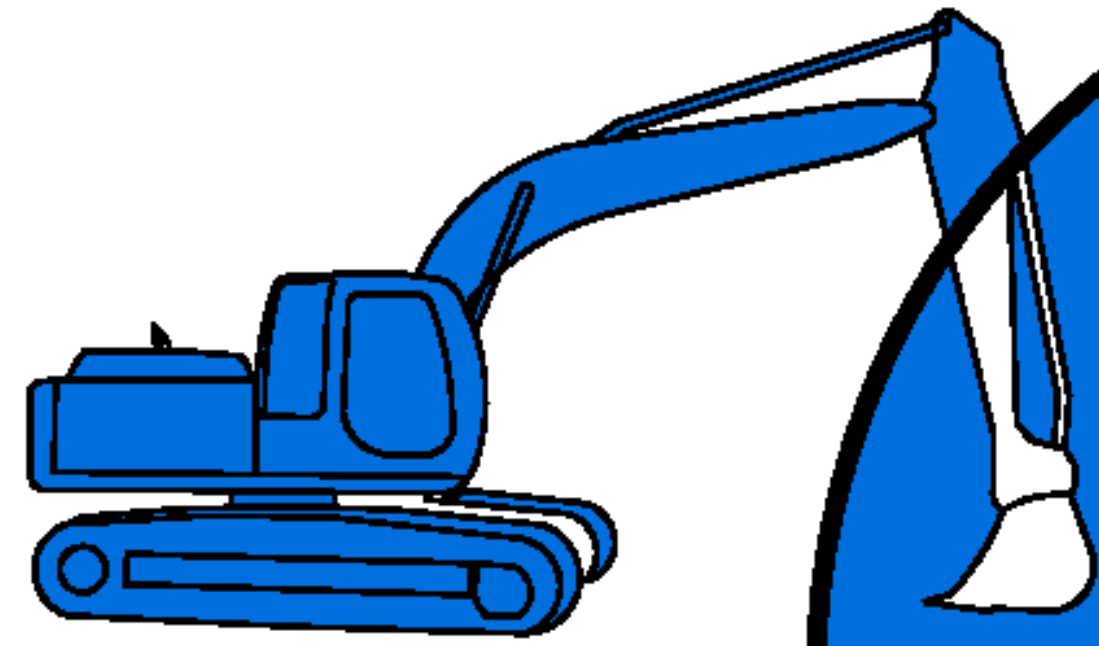


PUBLIC INFORMATION CENTRE CONSTRUCTION SCHEDULE

- **CONSTRUCTION TO COMMENCE
MAY 2018**
- **ANTICIPATED COMPLETION
AUGUST 2018**

INVESTING IN OUR COMMUNITY





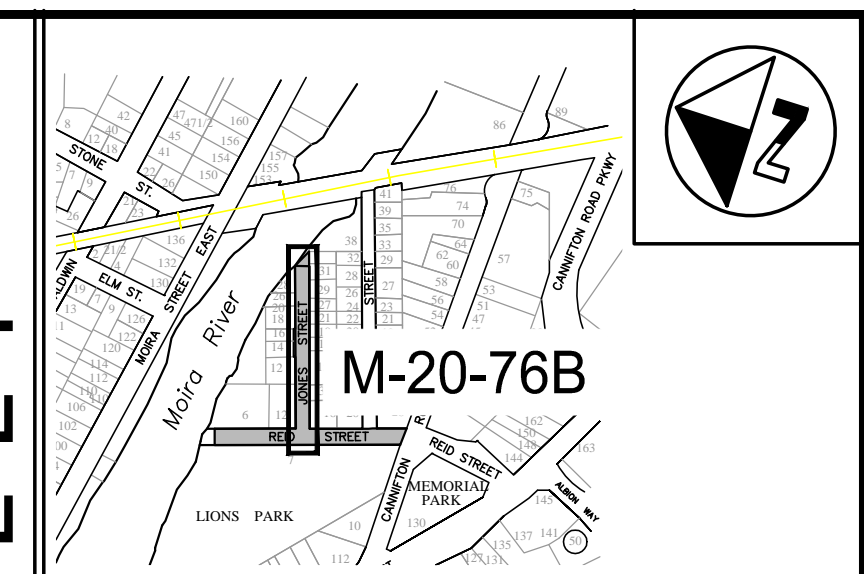
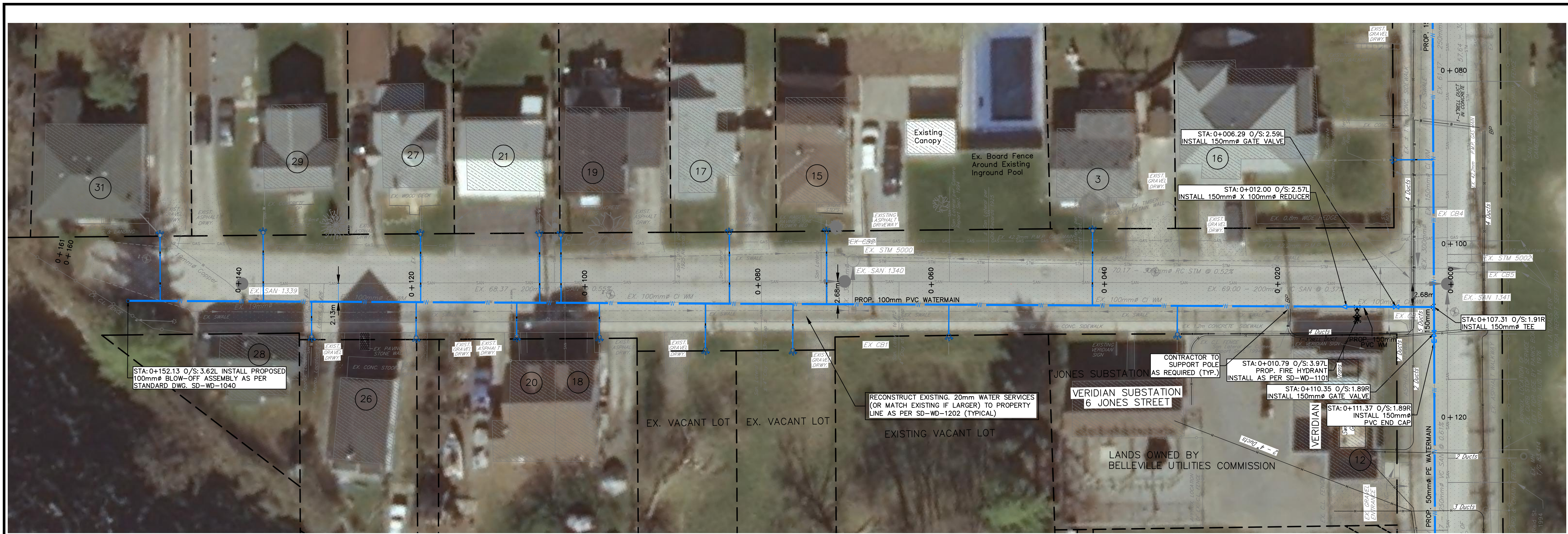
PUBLIC INFORMATION CENTRE PROJECT INFORMATION

ESTIMATED PROJECT COSTS

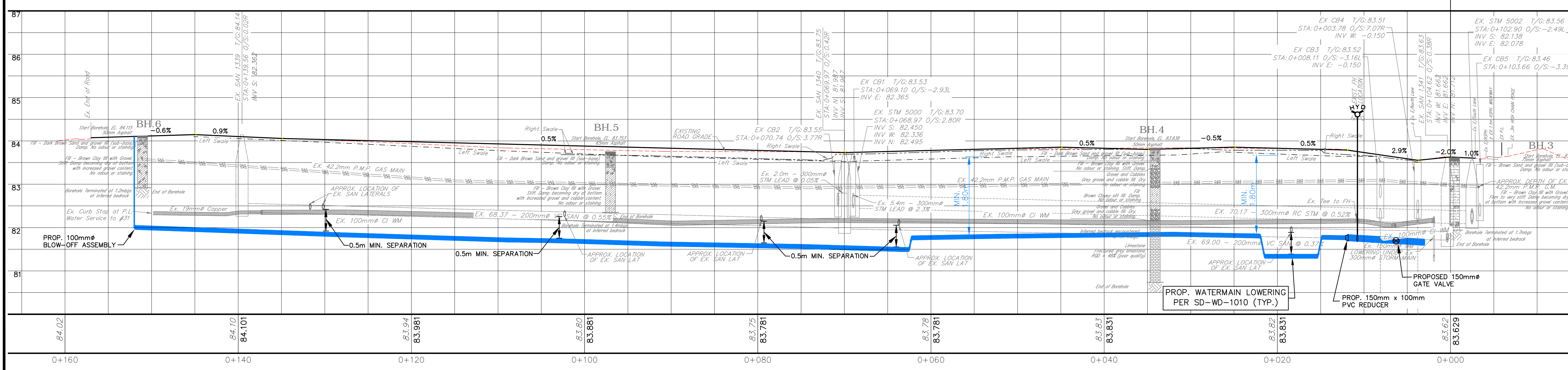
WATERMAIN CONSTRUCTION	\$ 575,000
ROADWORK	\$ 125,000
SANITARY REPAIRS	\$ 100,000
TOTAL	\$ 800,000

INVESTING IN OUR COMMUNITY





JONES STREET



B.M. ELEV 84.477
 TOP NUT OF FIRE HYDRANT WEST SIDE OF JONES STREET \pm 5 METERS NORTH OF REID STREET.

1	PUBLIC INFORMATION CENTRE	01/03/18	D.O.
NO.	REVISIONS	DATE	INITIAL

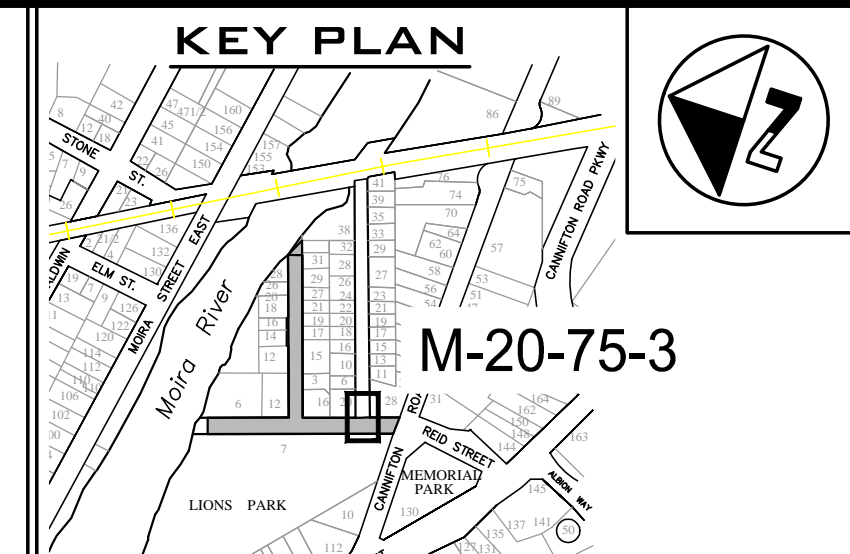
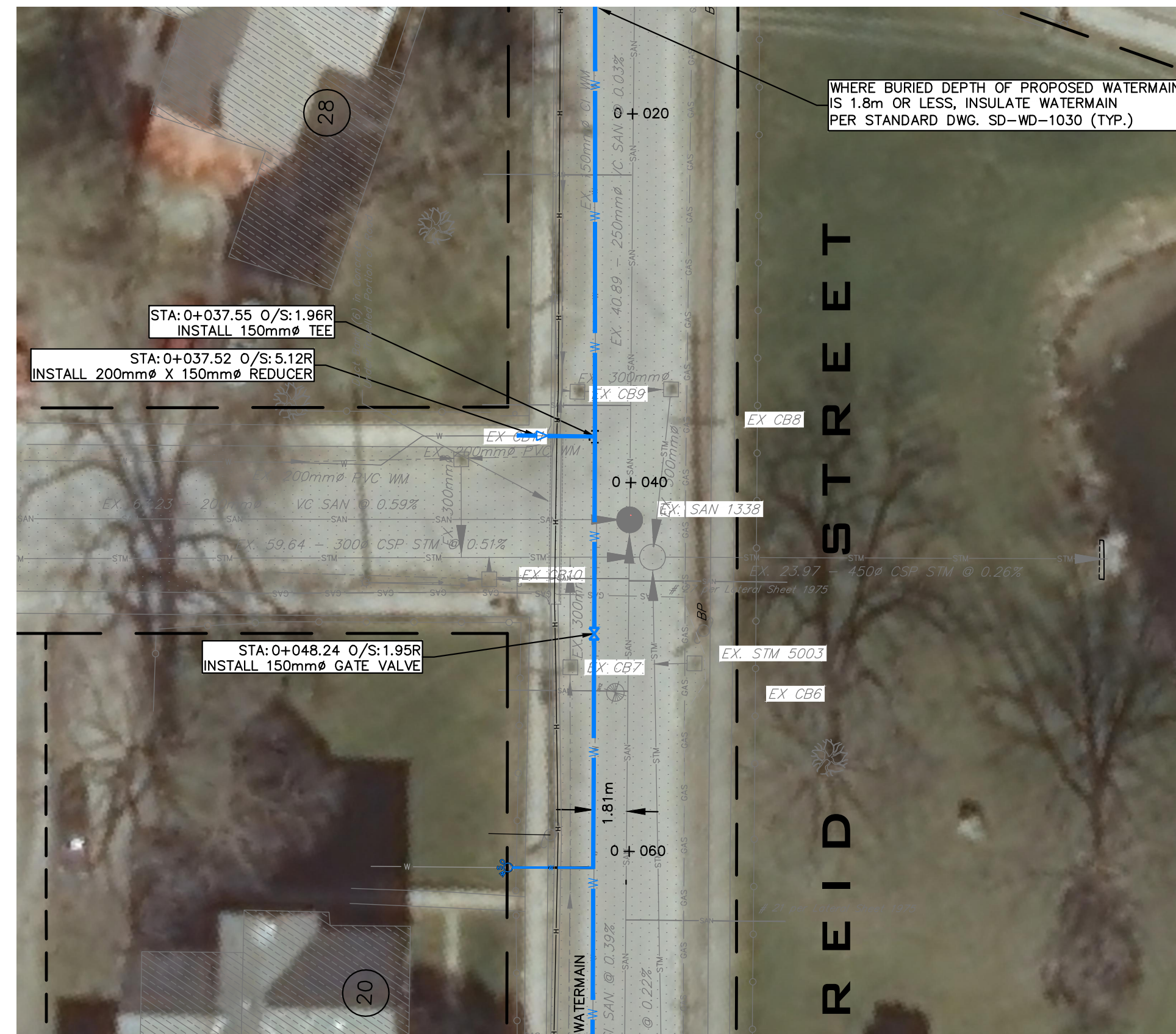
NOTES:
 1. DIMENSIONS ARE IN METRES UNLESS OTHERWISE STATED.
 2. REFER TO DRAWING No. M-20-75-3 FOR LEGEND.
 3. THIS DRAWING IS TO BE READ AND UNDERSTOOD IN CONJUNCTION WITH ALL OTHER PLANS AND DOCUMENTS APPLICABLE TO THIS PROJECT.

CAUTION:
 THE LOCATION OF UTILITIES IS APPROXIMATE ONLY, AND THE EXACT LOCATION SHOULD BE DETERMINED BY CONSULTING THE MUNICIPAL AUTHORITIES AND UTILITY COMPANIES CONCERNED. THE CONTRACTOR IS RESPONSIBLE TO PROVIDE THE LOCATION AND STATUS OF UTILITIES AND SHALL BE RESPONSIBLE FOR ADEQUATE PROTECTION OF PLANT AND EQUIPMENT FROM DAMAGE.

DATE	08/13/2013	H.SCALE	1:250	V.SCALE	1:50
DESIGN	A.W.G.	DRAWN	M.W.	APPROVED	D.O.



Contract ENG2017-21
 WATERMAIN RECONSTRUCTION
JONES STREET
 PLAN/PROFILE
 STATION -0+010 TO 0+160



EXISTING	LEGEND	PROPOSED
	WATERMAIN	
	WATER VALVE	
	WATER SERVICE	
	FIRE HYDRANT	
	SANITARY SEWER	
	STORM SEWER	
	NATURAL GAS	
	BELL DUCT/CABLE	
	BUC (Veridian) DUCT	
	SAN. MAINT. HOLE	
	STM. MAINT. HOLE	
	CATCHBASIN	
	LIGHT STANDARD	
	TREE	
	SIGN	
	UTILITY POLE	
	GUY WIRE	

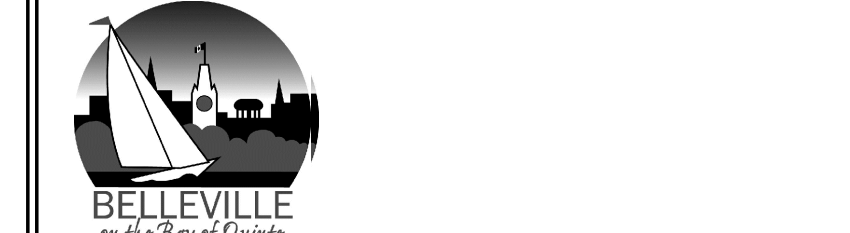
B.M. ELEV 84.651
TOP NUT OF FIRE HYDRANT AT THE NORTH WEST CORNER OF THE INTERSECTION OF CANNIFTON ROAD AND REID STREET.

NO.	REVISIONS	DATE	INITIAL
1	PUBLIC INFORMATION CENTRE	01/03/18	D.O.

NOTES:
1. DIMENSIONS ARE IN METRES UNLESS OTHERWISE STATED.
2. REFER TO DRAWING No. M-20-75-3 FOR LEGEND.
3. THIS DRAWING IS TO BE READ AND UNDERSTOOD IN CONJUNCTION WITH ALL OTHER PLANS AND DOCUMENTS APPLICABLE TO THIS PROJECT.

CAUTION:
THE LOCATION OF UTILITIES IS APPROXIMATE ONLY, AND THE EXACT LOCATION SHOULD BE DETERMINED BY CONSULTING THE MUNICIPAL AUTHORITIES AND UTILITY COMPANIES CONCERNED. THE CONTRACTOR IS RESPONSIBLE TO PROVIDE THE LOCATION AND STATUS OF UTILITIES AND SHALL BE RESPONSIBLE FOR ADEQUATE PROTECTION OF PLANT AND EQUIPMENT FROM DAMAGE.

DATE	H.SCALE	V.SCALE
08/13/2013	1:250	1:50



Contract ENG2017-21
WATERMAIN RECONSTRUCTION
JOHNSON STREET
PLAN/PROFILE
STATION -0+010 TO 0+025