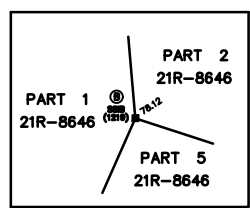


TOPOGRAPHIC SURVEY  
**PART OF LOT 16**  
**POINT ANNE CONCESSION**  
**TOWNSHIP OF THURLOW**  
**NOW IN THE CITY OF BELLEVILLE**  
**COUNTY OF HASTINGS**  
 METRIC SCALE 1 : 200

LOT 16 | LOT 17  
 POINT ANNE | CONCESSION



PART 2  
 21R-3092  
 PART 5 21R-8646  
 RIGHT OF WAY

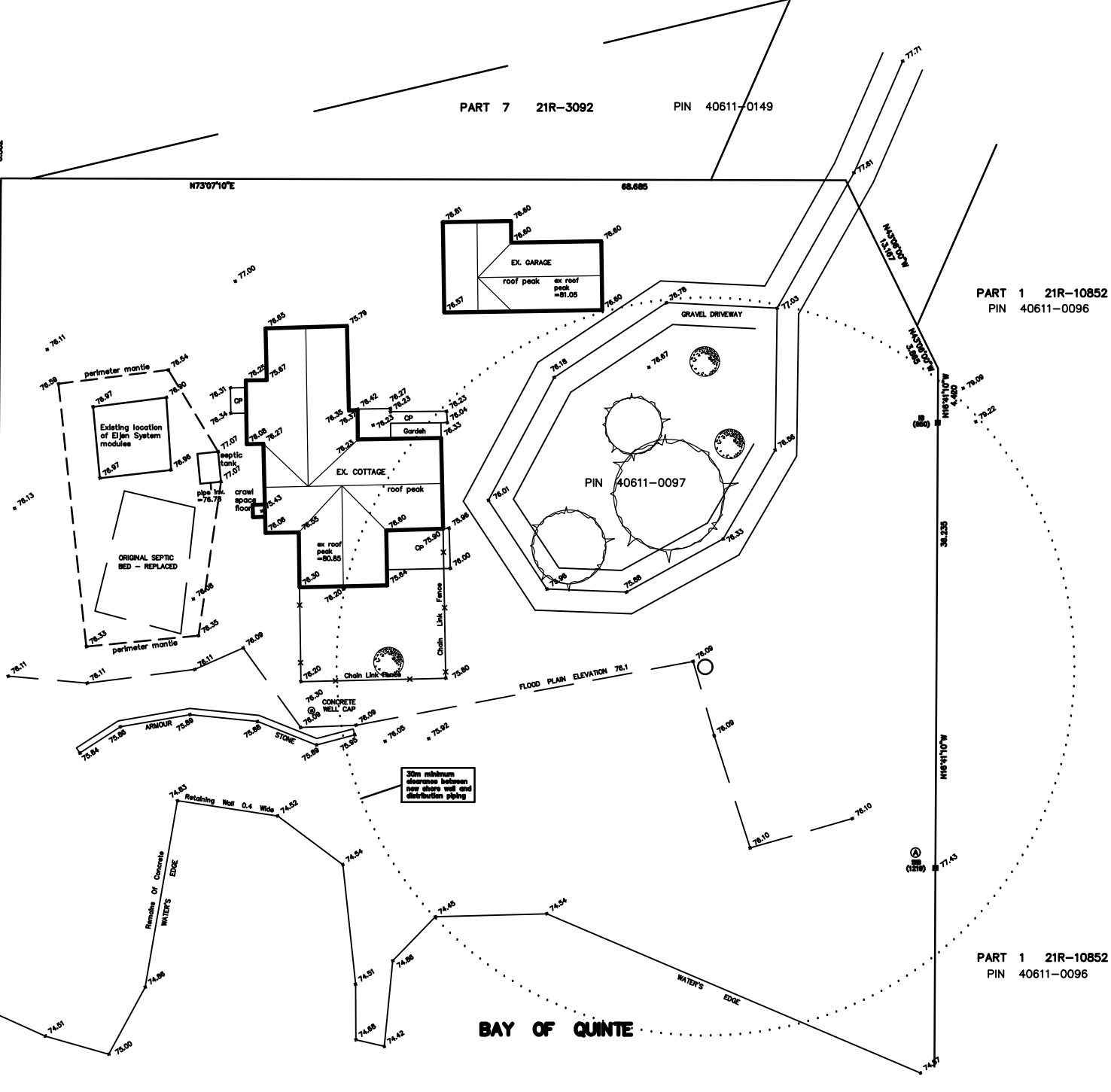
PART 6  
 21R-3092  
 PIN 40611-0149

PART 6  
 21R-3092  
 PIN 40611-0149

PART 7 21R-3092 PIN 40611-0149

PART 1 21R-10852  
 PIN 40611-0096

PART 1 21R-10852  
 PIN 40611-0096



- LEGEND :
- DENOTES SURVEY MONUMENT FOUND
  - DENOTES SURVEY MONUMENT PLANTED
  - SBH STANDARD IRON BAR
  - SBM SHORT STANDARD IRON BAR
  - SB IRON BAR
  - (SMB) S. BENCH O.L.S.
  - (121R) W. R. BRICK O.L.S.
  - CP CONCRETE PAD

METRIC :  
 DISTANCES AND COORDINATES SHOWN ON THIS PLAN ARE IN METRES AND CAN BE CONVERTED TO FEET BY DIVIDING BY 0.3048.

OBSERVED REFERENCE POINTS DERIVED FROM GPS OBSERVATIONS USING REAL TIME NETWORK (RTN) UTM ZONE 18, NAD83 (CSRS) 2010 COORDINATES TO METRIC ACCURACY PER SEC. 14 (2) OF O. REG. 218/10

POINT ID	NORTHING	EASTING
A	4881870.38	314852.88
B	4881870.38	314852.88

COORDINATES CANNOT, IN THEMSELVES, BE USED TO RE-ESTABLISH THE CORNERS OR BOUNDARIES SHOWN ON THIS PLAN

NOTES :

BEARINGS ARE UTM GRID BEARINGS AND ARE DERIVED FROM OBSERVED REFERENCE POINTS A AND B BY REAL TIME NETWORK OBSERVATIONS UTM ZONE 18, NAD 83 (CSRS) 2010

ELEVATIONS DERIVED USING SOONIA GPS EQUIPMENT TO CONVERT LOCAL ASTRONOMIC BEARINGS TO GRID BEARINGS ROTATE 137° CLOCKWISE

FIELD WORK COMPLETED JANUARY 5, 2023

ADDITIONAL FIELD WORK MAY BE REQUIRED TO CONFIRM THE BOUNDARIES OF THE PROPERTY

PLOTTED FEBRUARY 6, 2023

218 CHURCH STREET  
 BELLEVILLE, ONTARIO

**WATSON**  
 LAND SURVEYORS Ltd.

K9H - 3C3  
 (813) 962 - 9521

land@watsonsurveyors.ca PROJECT N# 13966-M-22