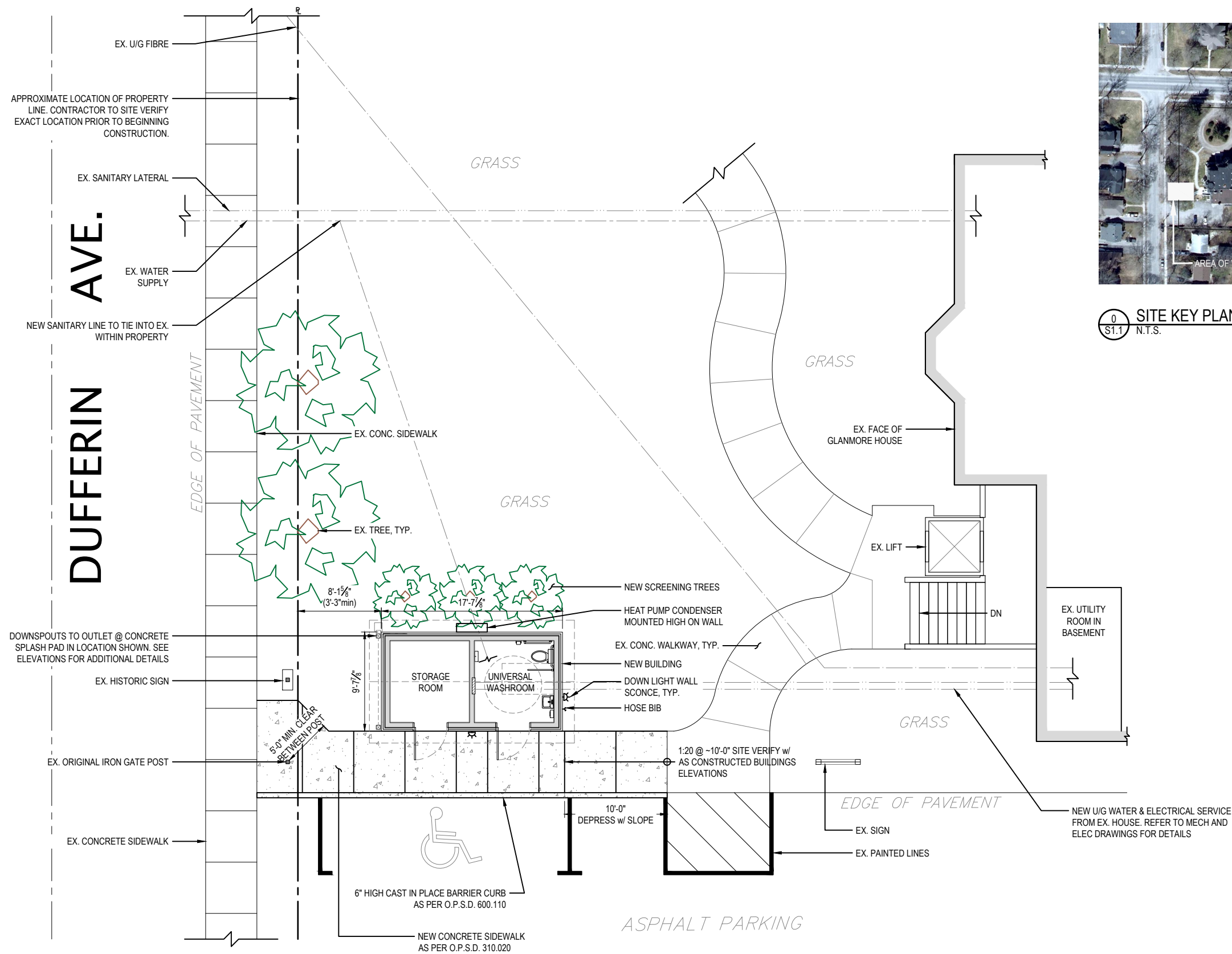


FILENAME: 057-23 - Glanmore House.dwg



0 SITE KEY PLAN  
S1.1 N.T.S.

- GENERAL NOTES:
- ALL WORK SHALL BE IN ACCORDANCE WITH RELEVANT CODES AND GUIDELINES
  - ALL DRAWINGS AND ADDENDA ARE TO BE READ AS AND IN CONJUNCTION WITH THE SPECIFICATIONS
  - CONTRACTOR MUST REPORT ANY DISCREPANCIES TO THE ENGINEER FOR RESOLUTION BEFORE COMMENCING THE WORK
  - ANY CHANGES MUST BE APPROVED BY THE ENGINEER

A A DETAIL NO.  
B B DWG. NO. - WHERE DETAILED



04	JLFA	ISSUED FOR PERMIT	23 / 11 / 20
03	JLFA	ISSUED FOR REVIEW	23 / 09 / 13
02	AB	ISSUED FOR REVIEW	23 / 08 / 24
01	AB	ISSUED FOR CONCEPTUAL REVIEW	23 / 07 / 24

STAMP



DWG NAME:

PROPOSED SITE PLAN

PROJECT INFORMATION:  
NEW ACCESSORY WASHROOM BUILDING  
GLANMORE NATIONAL HISTORIC SITE  
257 BRIDGE ST. E, BELLEVILLE ONTARIO

**Q&E** Q&E ENGINEERING INC.  
CIVIL-STRUCTURAL ENGINEERS  
684 MONEYMORE ROAD, ROSLIN, ON.,  
O. (613) 707-0706  
E. info@qe-engineering.com

PROJECT # 057-23	DWG #
DATE 2023/11/20	<b>S1.1</b>
SCALE AS SHOWN	

1 PROPOSED SITE PLAN  
S1.1 3/32" = 1'-0"