

QR621874

Together with

parts 5, 7, 9, 19

maintain / operate..

Buried / underground

watermain

parts 6, 7, 8, 9

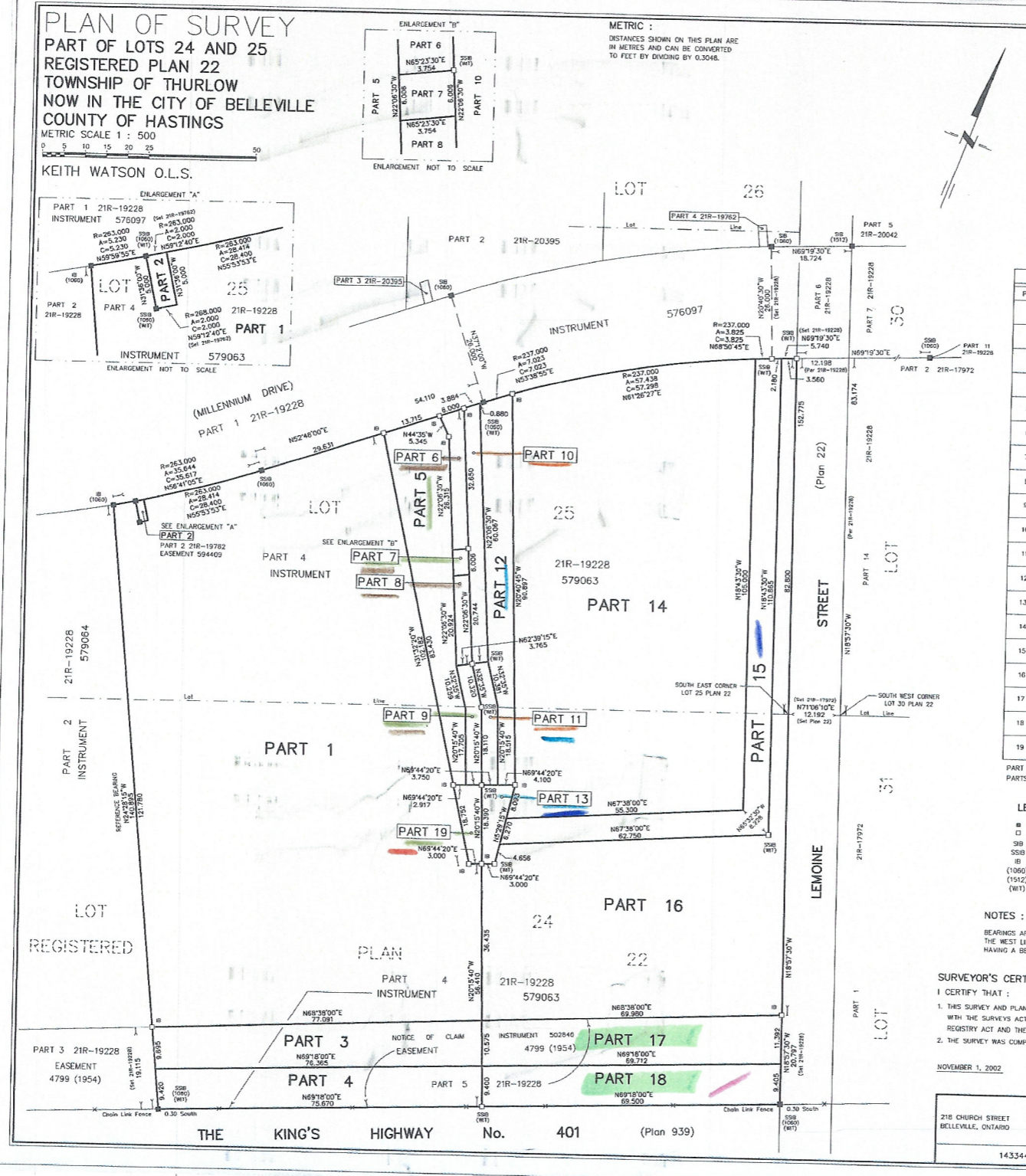
- Row - ingress / egress

Part 19

- maintain / replace

electrical / telephone

transmission lines



PLAN 21R-20488

RECEIVED AND DEPOSITED

(Date) November 1, 2002

*Keith Watson*  
 LAND REGISTRAR  
 FOR THE REGISTRY  
 DIVISION OF HASTINGS (24)

I REQUIRE THIS PLAN TO BE DEPOSITED UNDER THE REGISTRY ACT.

(Date) NOVEMBER 1 2002

*Keith Watson*  
 KEITH WATSON  
 ONTARIO LAND SURVEYOR

PART	DESCRIPTION	INSTRUMENT	AREA
1	PART OF LOTS 24 AND 25 PLAN 22		9395.0 m. <sup>2</sup>
2	PART OF LOT 25 PLAN 22		10.0 m. <sup>2</sup>
3	PART OF LOT 24 PLAN 22		777.1 m. <sup>2</sup>
4	PART OF LOT 24 PLAN 22		714.6 m. <sup>2</sup>
5	PART OF LOTS 24 AND 25 PLAN 22	579063	758.7 m. <sup>2</sup>
6	PART OF LOT 25 PLAN 22		126.5 m. <sup>2</sup>
7	PART OF LOT 25 PLAN 22		22.5 m. <sup>2</sup>
8	PART OF LOT 25 PLAN 22		78.1 m. <sup>2</sup>
9	PART OF LOTS 24 AND 25 PLAN 22		105.7 m. <sup>2</sup>
10	PART OF LOT 25 PLAN 22		224.0 m. <sup>2</sup>
11	PART OF LOTS 24 AND 25 PLAN 22		107.5 m. <sup>2</sup>
12	PART OF LOTS 24 AND 25 PLAN 22	579063	546.0 m. <sup>2</sup>
13	PART OF LOT 24 PLAN 22		100.0 m. <sup>2</sup>
14	PART OF LOTS 24 AND 25 PLAN 22		5661.5 m. <sup>2</sup>
15	PART OF LOTS 24 AND 25 PLAN 22		1001.7 m. <sup>2</sup>
16	PART OF LOTS 24 AND 25 PLAN 22		3318.5 m. <sup>2</sup>
17	PART OF LOT 24 PLAN 22		766.8 m. <sup>2</sup>
18	PART OF LOT 24 PLAN 22		654.3 m. <sup>2</sup>
19	PART OF LOT 24 PLAN 22		88.9 m. <sup>2</sup>

PART 2 - SUBJECT TO EASEMENT BY INSTRUMENT 594409.

PARTS 3, 4, 17 AND 18 - SUBJECT TO EASEMENT BY INSTRUMENT 4799 (1954).

LEGEND:

- DENOTES SURVEY MONUMENT FOUND
- SURVEY MONUMENT PLANTED
- SB STANDARD IRON BAR
- SSB SHORT STANDARD IRON BAR
- IB IRON BAR
- (1060) W. L. WATSON O.L.S.
- (1912) P. A. MILLER O.L.S.
- (WT) WITNESS

NOTES:

BEARINGS ARE ASTRONOMIC AND ARE REFERRED TO THE WEST LIMITS OF PARTS 4 AND 5, PLAN 21R-19228 HAVING A BEARING OF N24°28'15"W.

SURVEYOR'S CERTIFICATE:

I CERTIFY THAT:

- THIS SURVEY AND PLAN ARE CORRECT AND IN ACCORDANCE WITH THE SURVEYS ACT, THE SURVEYORS ACT AND THE REGISTRY ACT AND THE REGULATIONS MADE UNDER THEM.
- THE SURVEY WAS COMPLETED ON THE 1<sup>st</sup> DAY OF NOVEMBER, 2002.

NOVEMBER 1, 2002

*Keith Watson*  
 KEITH WATSON  
 ONTARIO LAND SURVEYOR

218 CHURCH STREET  
 BELLEVILLE, ONTARIO

**WATSON**  
 LAND SURVEYORS Ltd.

1433442 PROJECT N# 2892-V-02

QR621874

SUBJECT TO

parts 10 + 11

- Row ingress / egress

favour of PIN 40432-0358

parts 11, 12, 13

maintain / operate

buried cable

- electrical / telephone

transmission lines

- favour of 40432-0358

parts 13 + 15

- maintain .. repair

buried underground

sanitary sewers / gas lines

- favour of PIN 40432-0358

part 18

maintain surface / storm water

drainage facilities

- in favour of

PW 40432-0358

PW 40432-0256

PW 40432-0583

THE 4799 - Bell Telephone

Notice of CLAIM - QR502846

parts 17 + 18