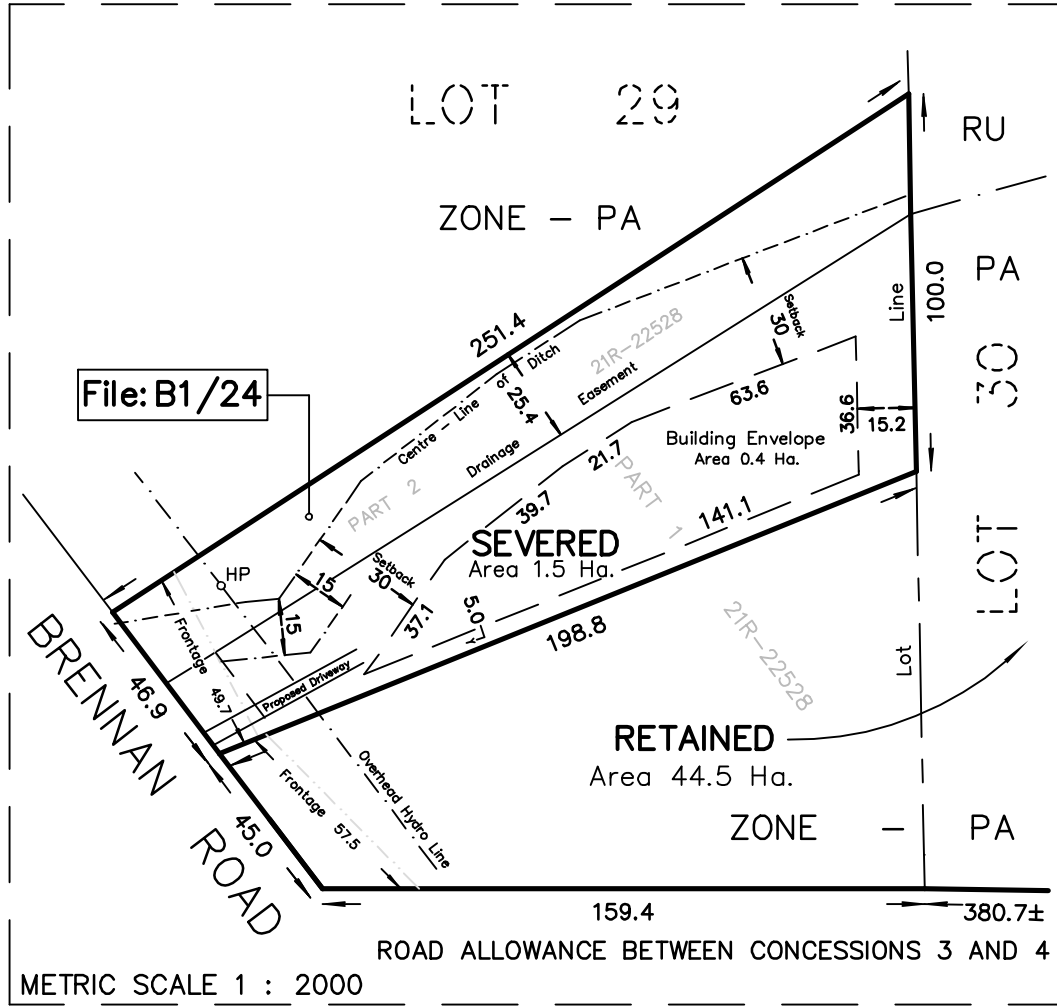


# SKETCH for RE-ZONING APPLICATION

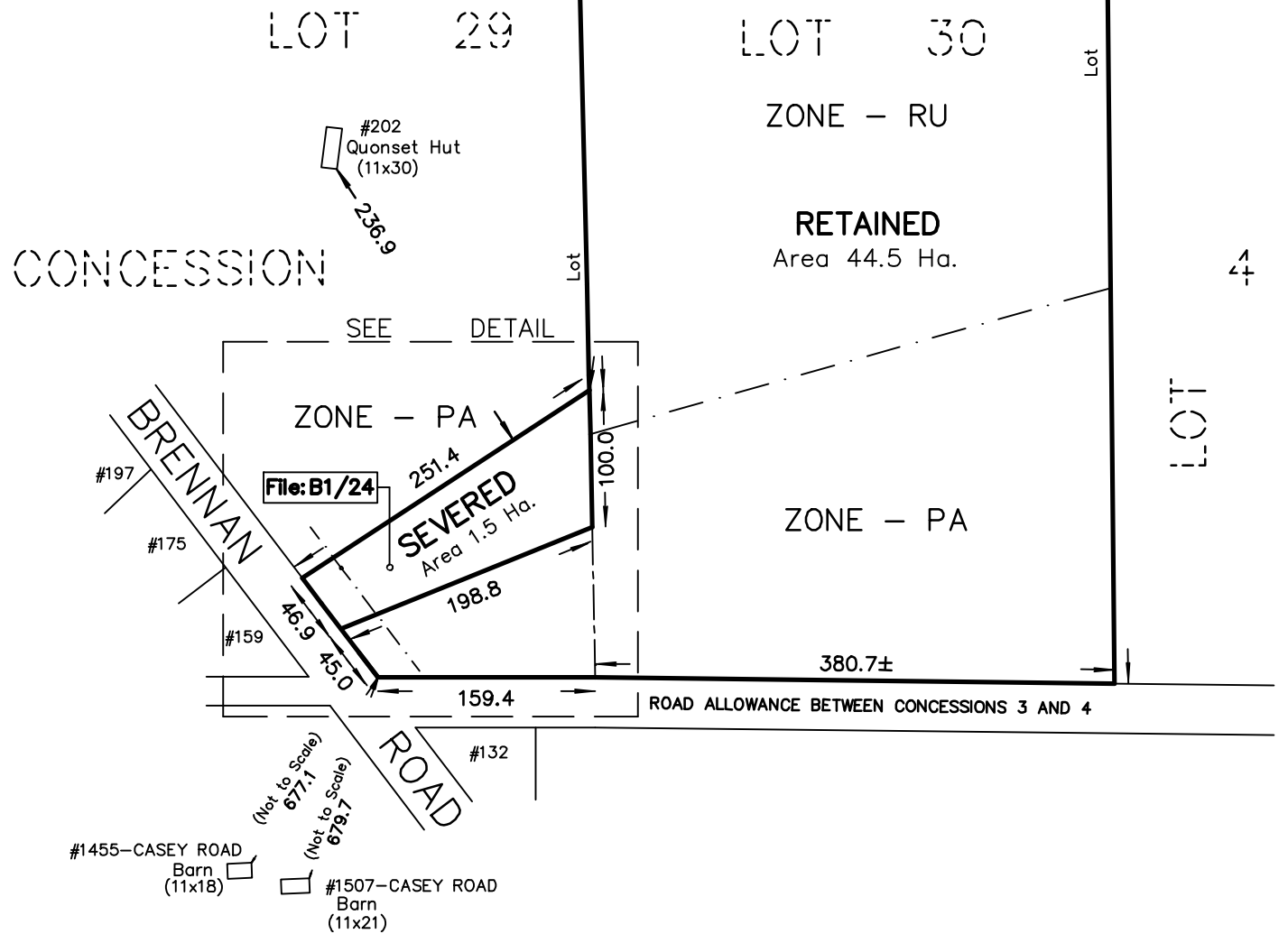
METRIC SCALE 1 : 5000



## DETAIL



METRIC SCALE 1 : 2000



### NOTES :

ACROSS FROM #159 BRENNAN ROAD

PART OF LOTS 29 AND 30  
CONCESSION 4  
TOWNSHIP OF THURLOW  
NOW IN THE CITY OF BELLEVILLE  
COUNTY OF HASTINGS

DIMENSIONS AND INFORMATION SHOWN ARE DERIVED FROM PLAN 21R-22528

(3014) SETBACKS APPLIED:  
INTERIOR SIDE YARD SETBACK - 10% OF FRONTAGE  
EXTERIOR SIDE YARD SETBACK 9.0  
FRONT AND REAR YARD SETBACK 15.24

DISTANCES SHOWN ON THIS PLAN ARE IN METRES  
AND CAN BE CONVERTED TO FEET BY DIVIDING BY 0.3048.

MARCH 28, 2024

### CAUTION

THIS IS NOT A PLAN OF SURVEY AND SHALL NOT BE USED  
EXCEPT FOR THE PURPOSE INDICATED IN THE TITLE BLOCK

218 CHURCH STREET  
BELLEVILLE, ONTARIO

**WATSON**  
LAND SURVEYORS Ltd.

K8N - 3C3  
(613) 962 - 9521

© Copyright WATSON LAND SURVEYORS LTD. 2023

PROJECT N<sup>o</sup> 14290-S-22